



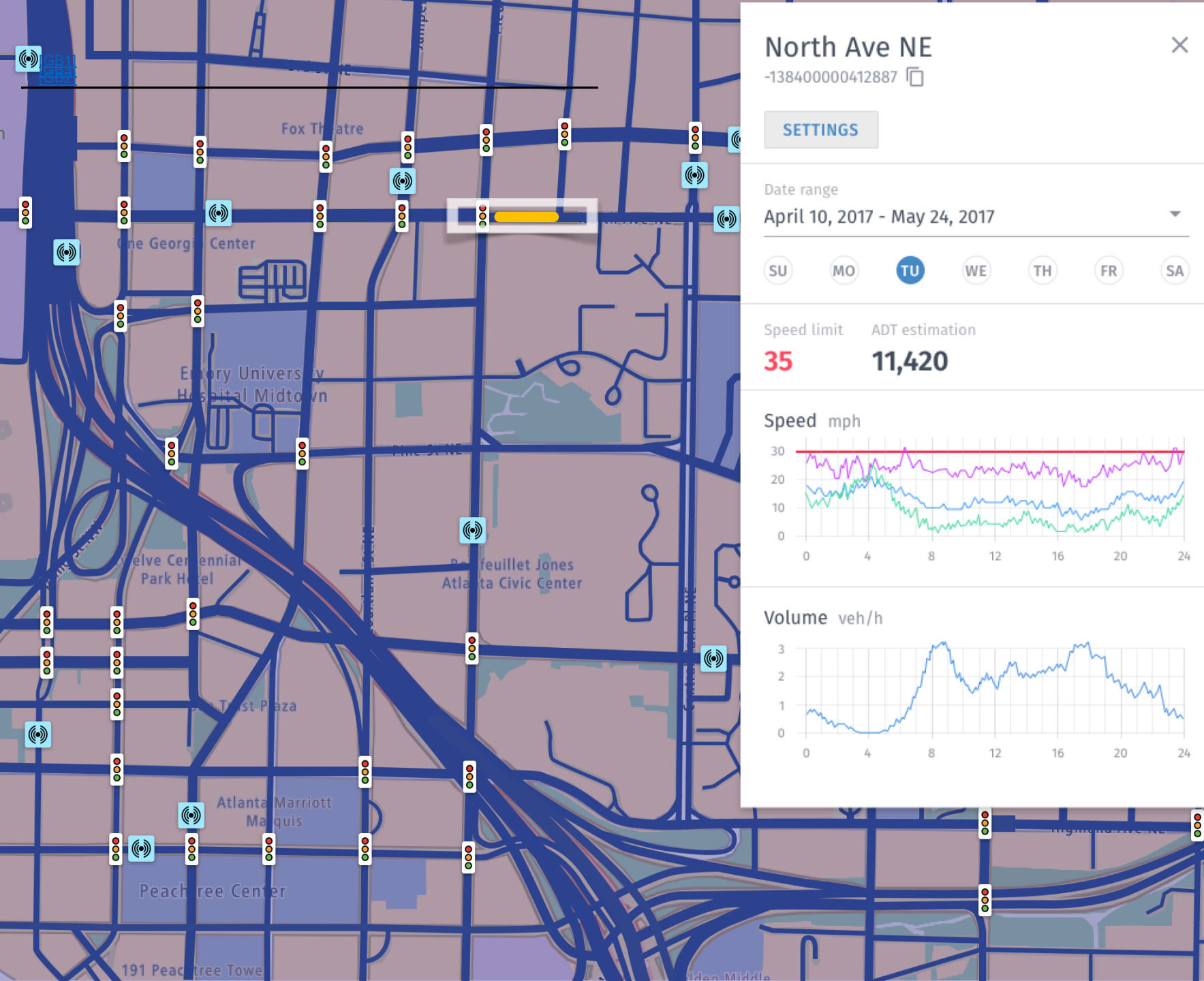
Hi-res dataset for mobility
improvement analysis

Methodology

Ticon methodology is based on a comprehensive study of urban traffic patterns through at least one year.

The key feature of Ticon is our High Resolution dataset with 100% spatial and temporal coverage that demonstrates speeds, volumes and their derivatives for very small road segments (as short as 10 m and on average about 40 m).

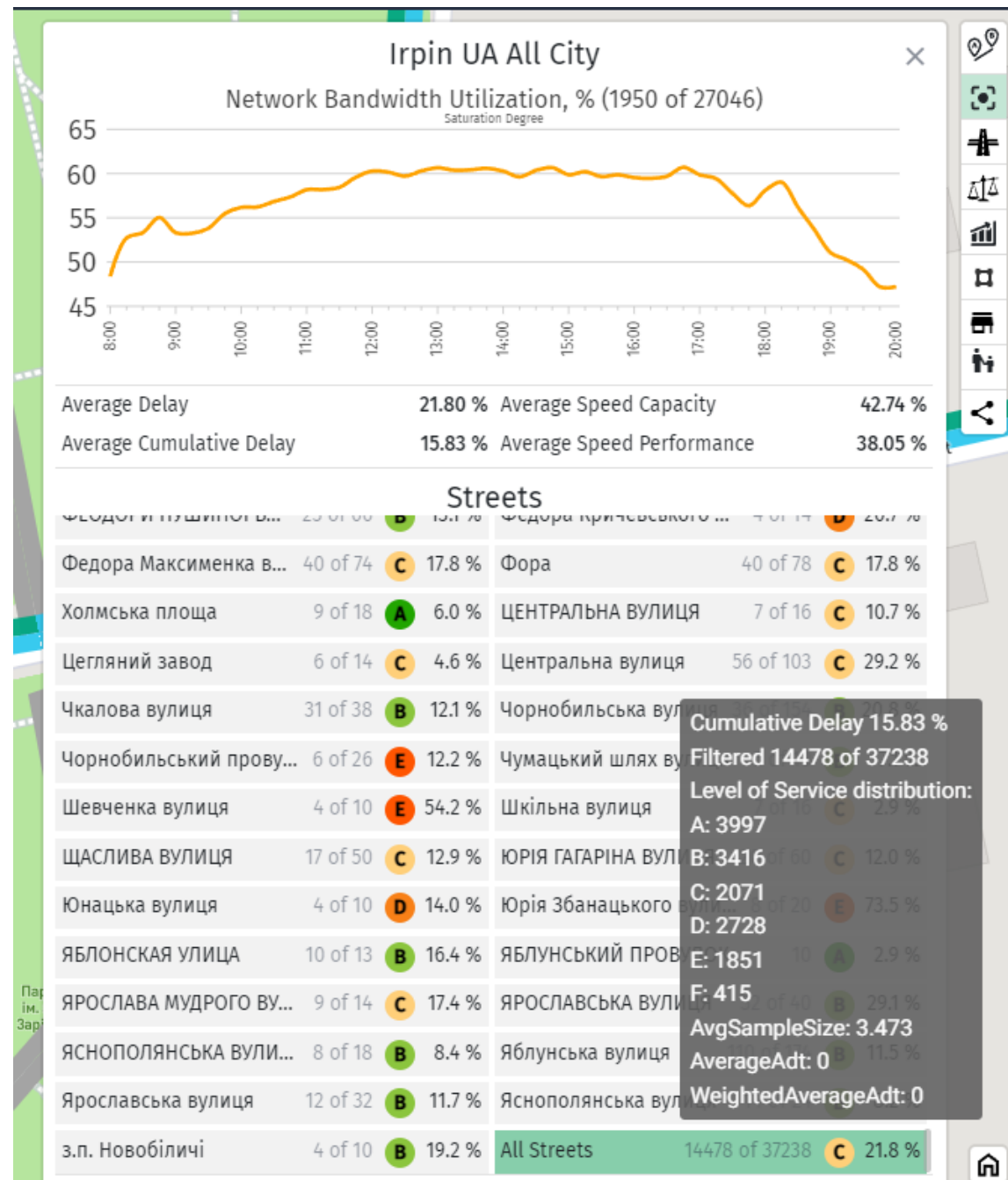
It is this feature, pioneered and unique to Ticon, that provides magic superpower to all Ticon applications.



Data for the area

100% temporal and spatial coverage

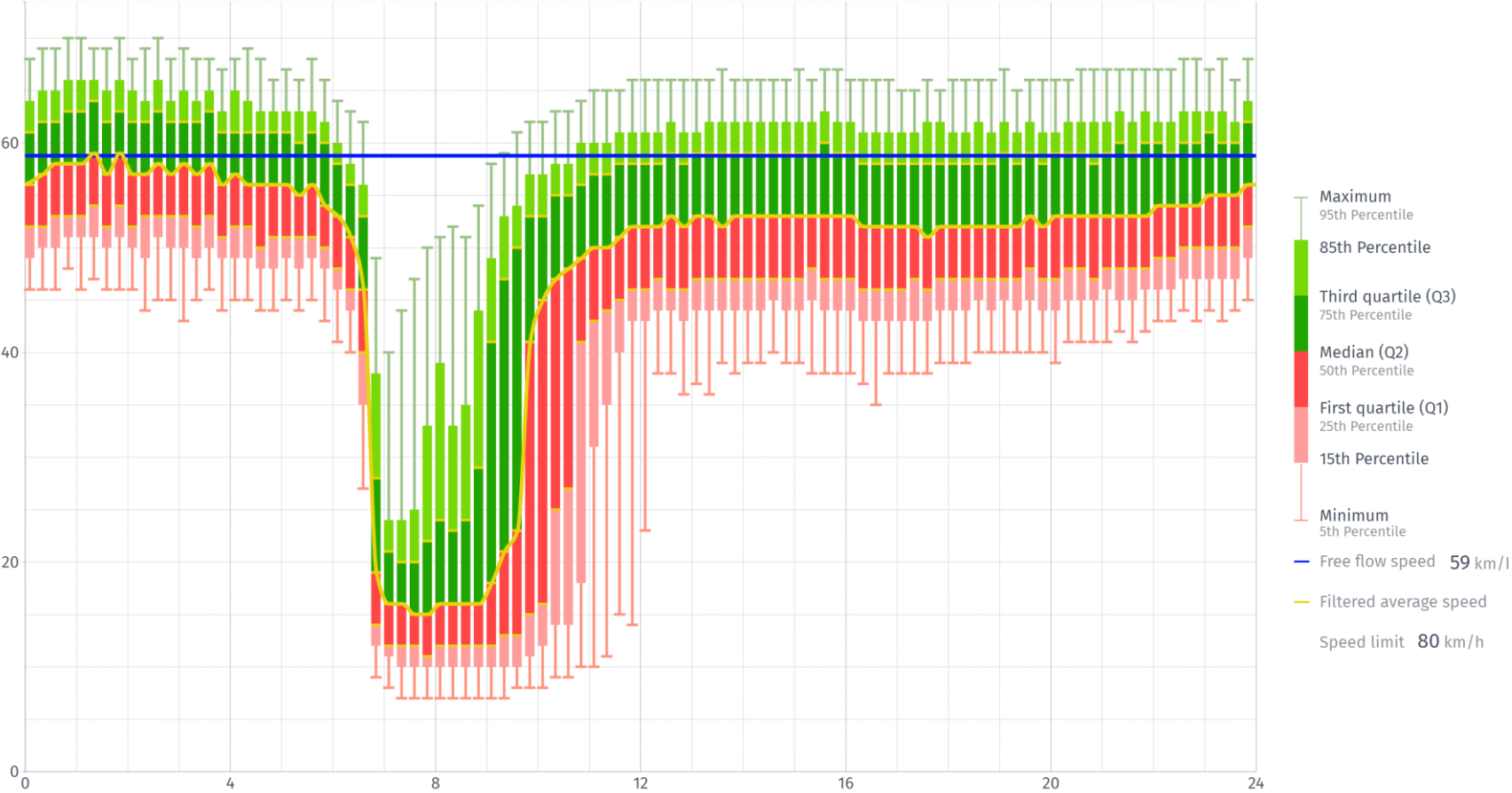
Network bandwidth utilization & Level Of Service for each street



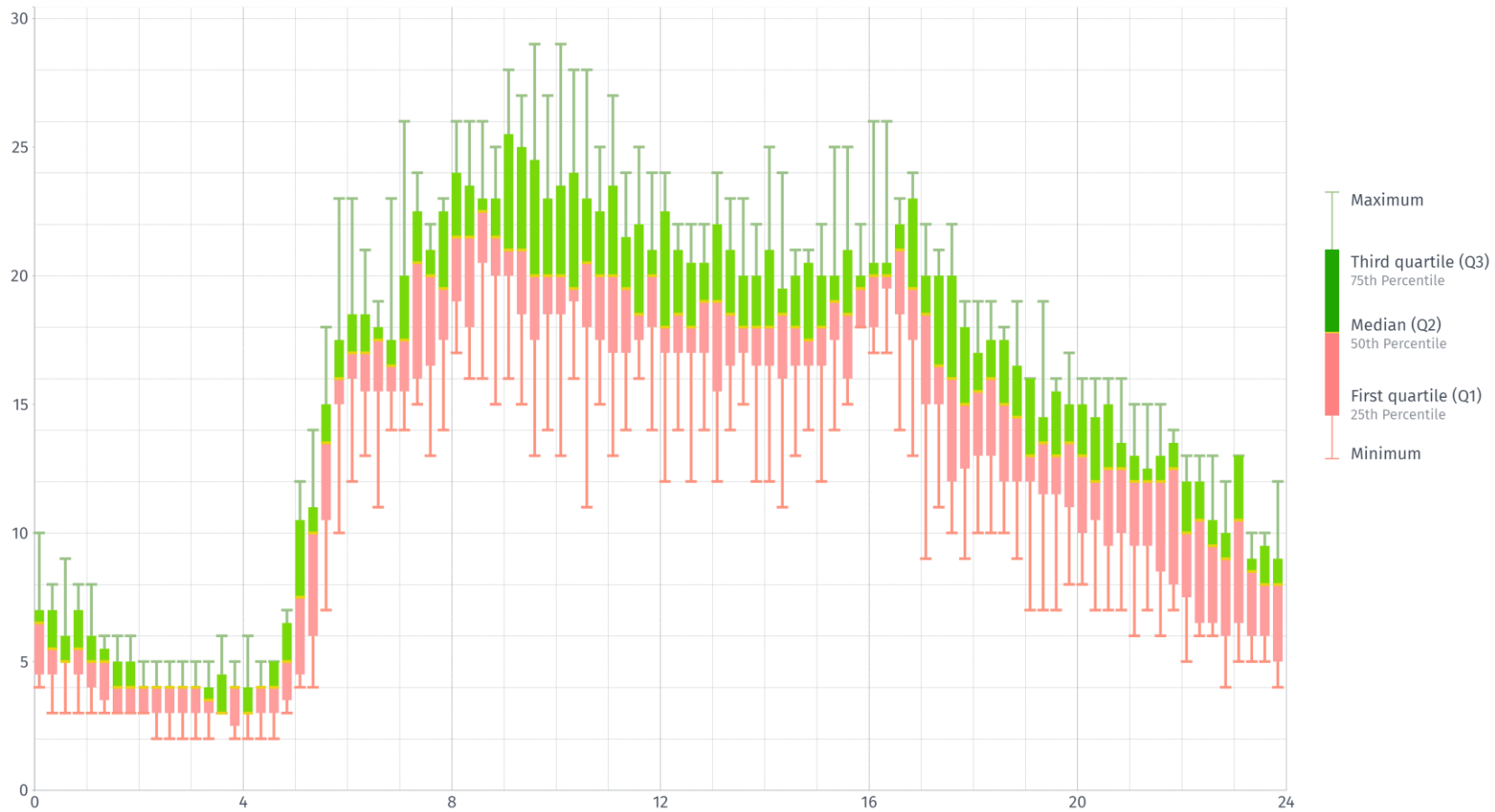
Data for each segment

Short segments, not polygons or TMC

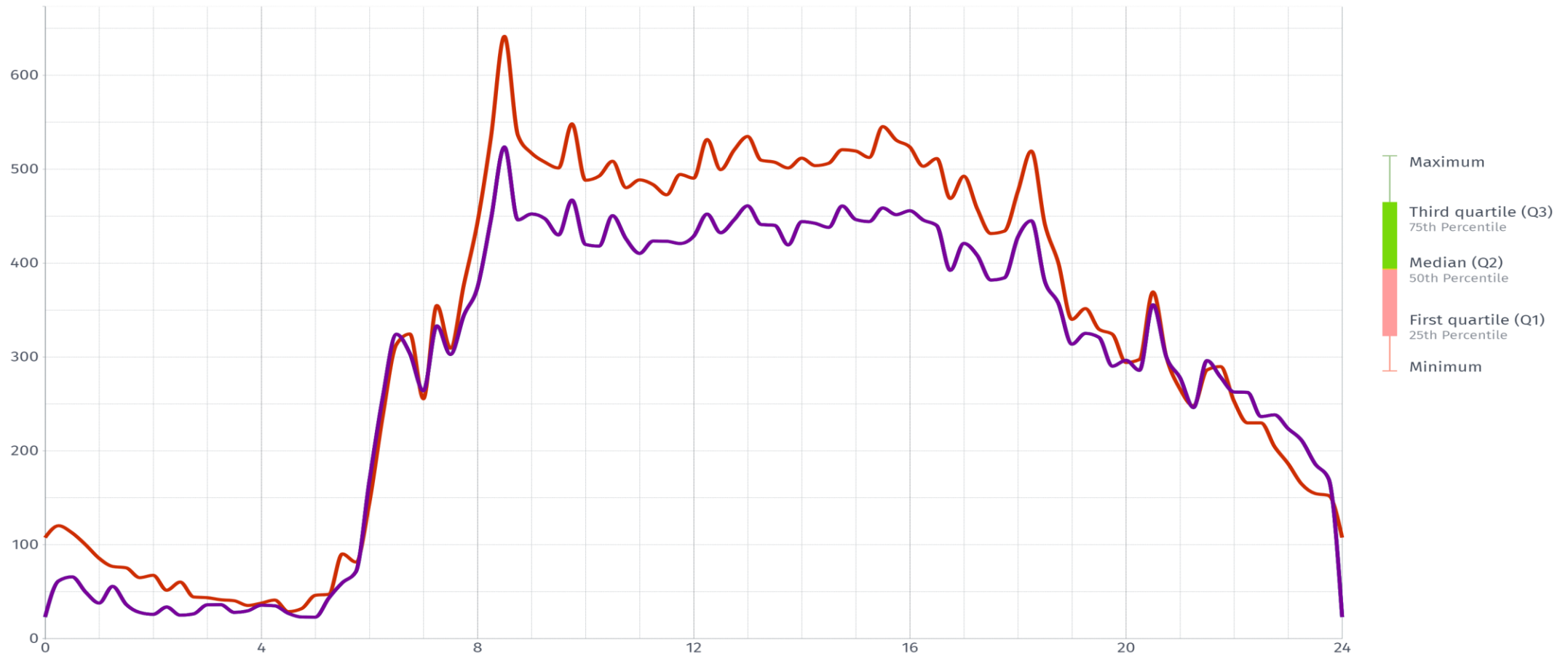
Traffic flow speed distribution



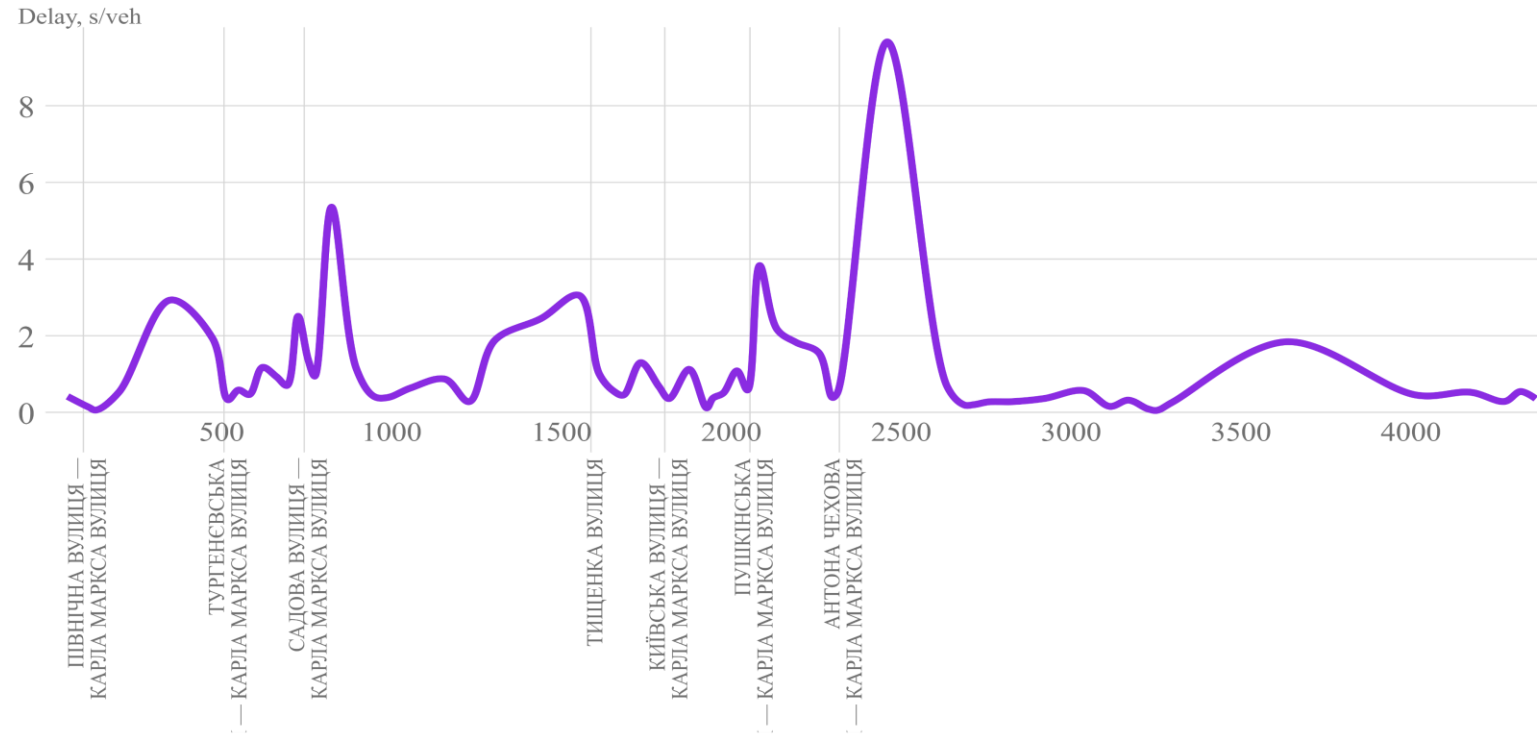
Probe size distribution



True traffic flow volume estimation

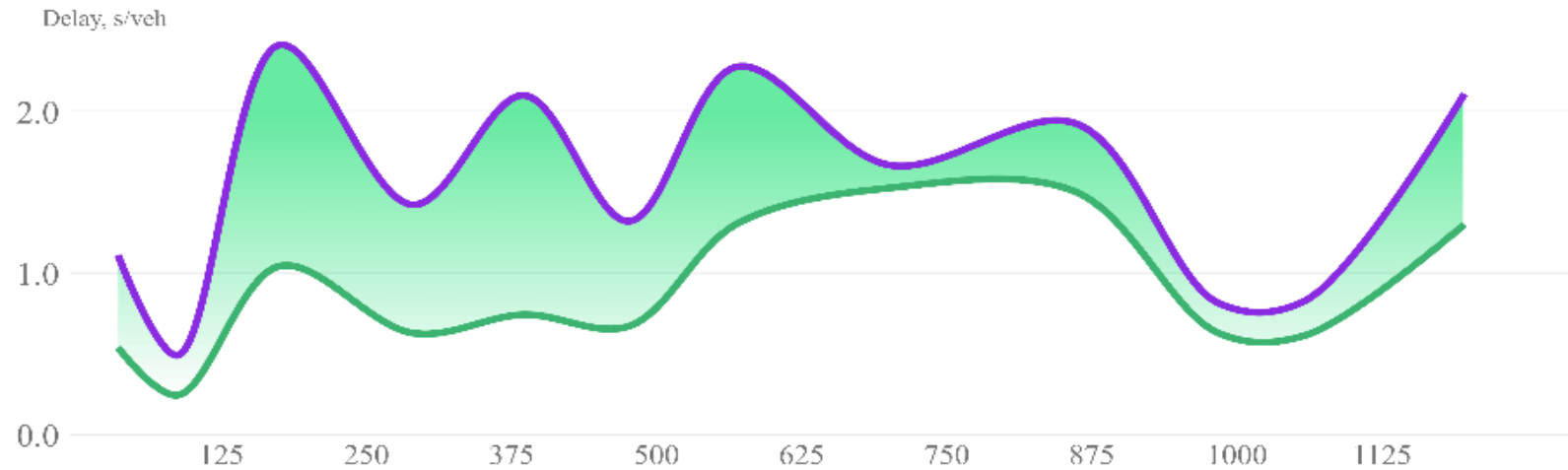


Street cardiogram



Distance, m (0...4387 m from ПІВНІЧНА ВУЛИЦЯ — КАРЛА МАРКСА ВУЛИЦЯ to АНТОНА ЧЕХОВА ВУЛИЦЯ — КАРЛА МАРКСА ВУ.

Before/After Street Cardiogram

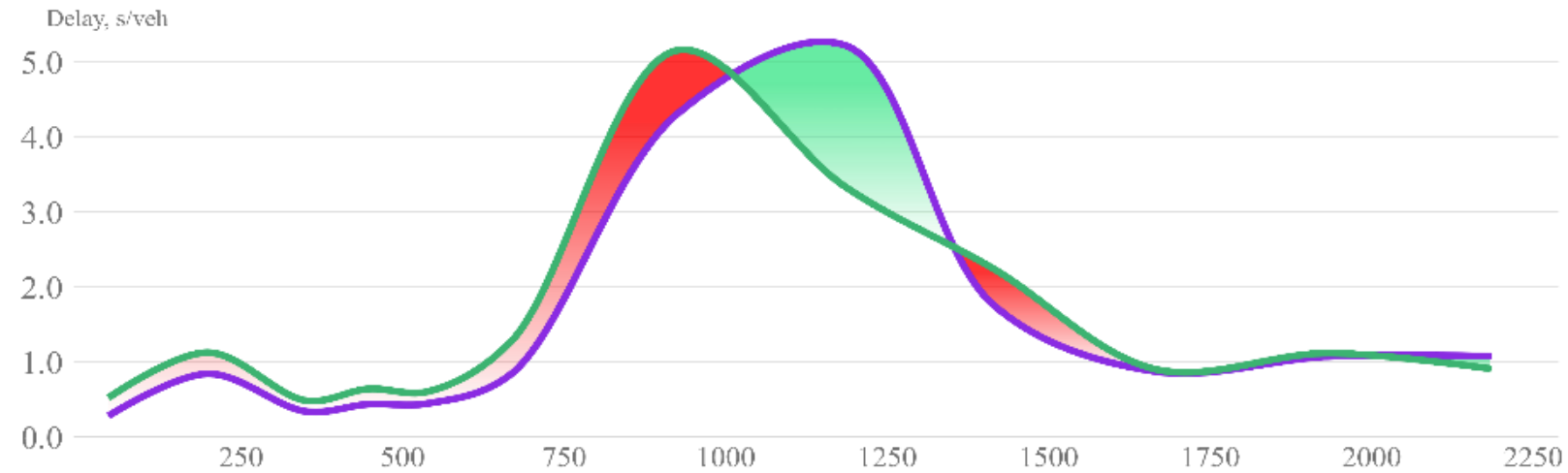


Delay “BEFORE” is smaller then delay “AFTER” - Success!

Distance, ft (0...1296 ft)

Delay Before ———
Delay After ———

Before/After Street Cardiogram



Delay decrease is not consistent - Not so good...

Distance, ft (0...2280 ft)

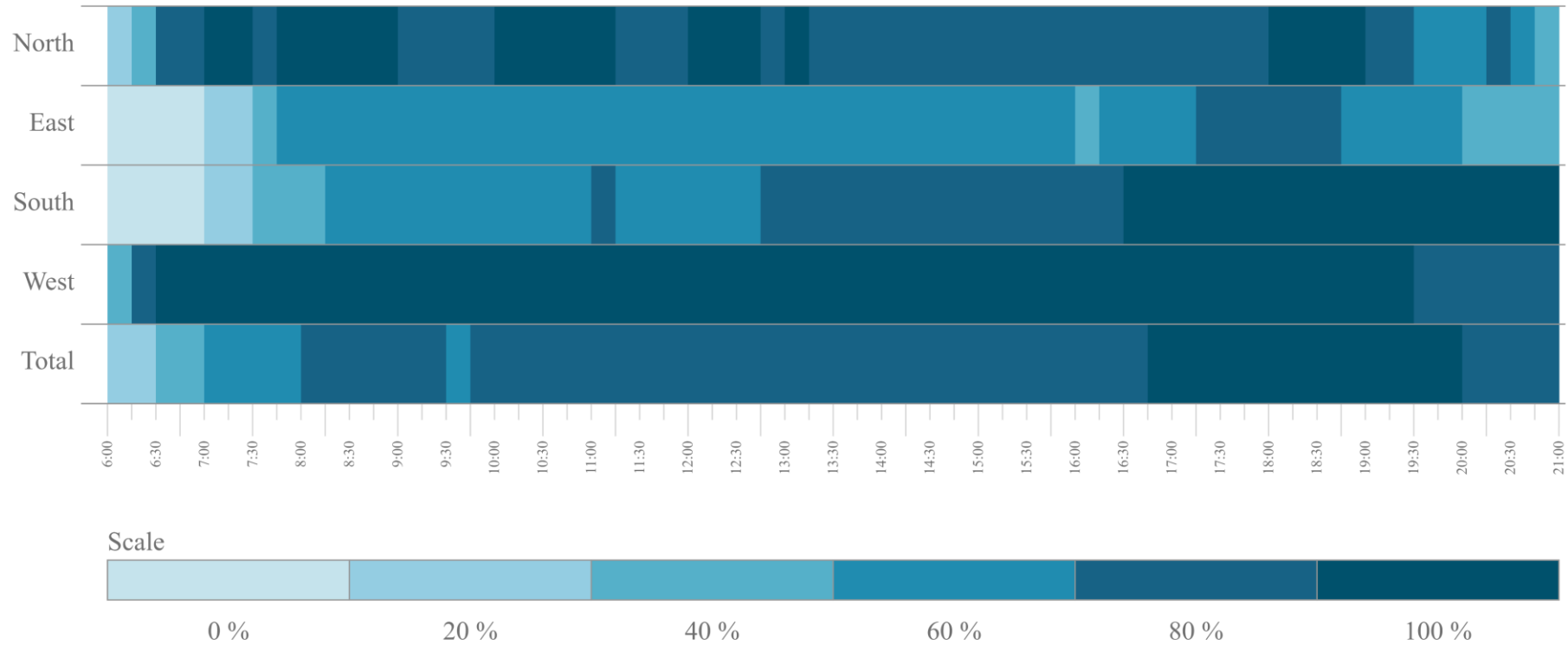
Delay Before



Delay After



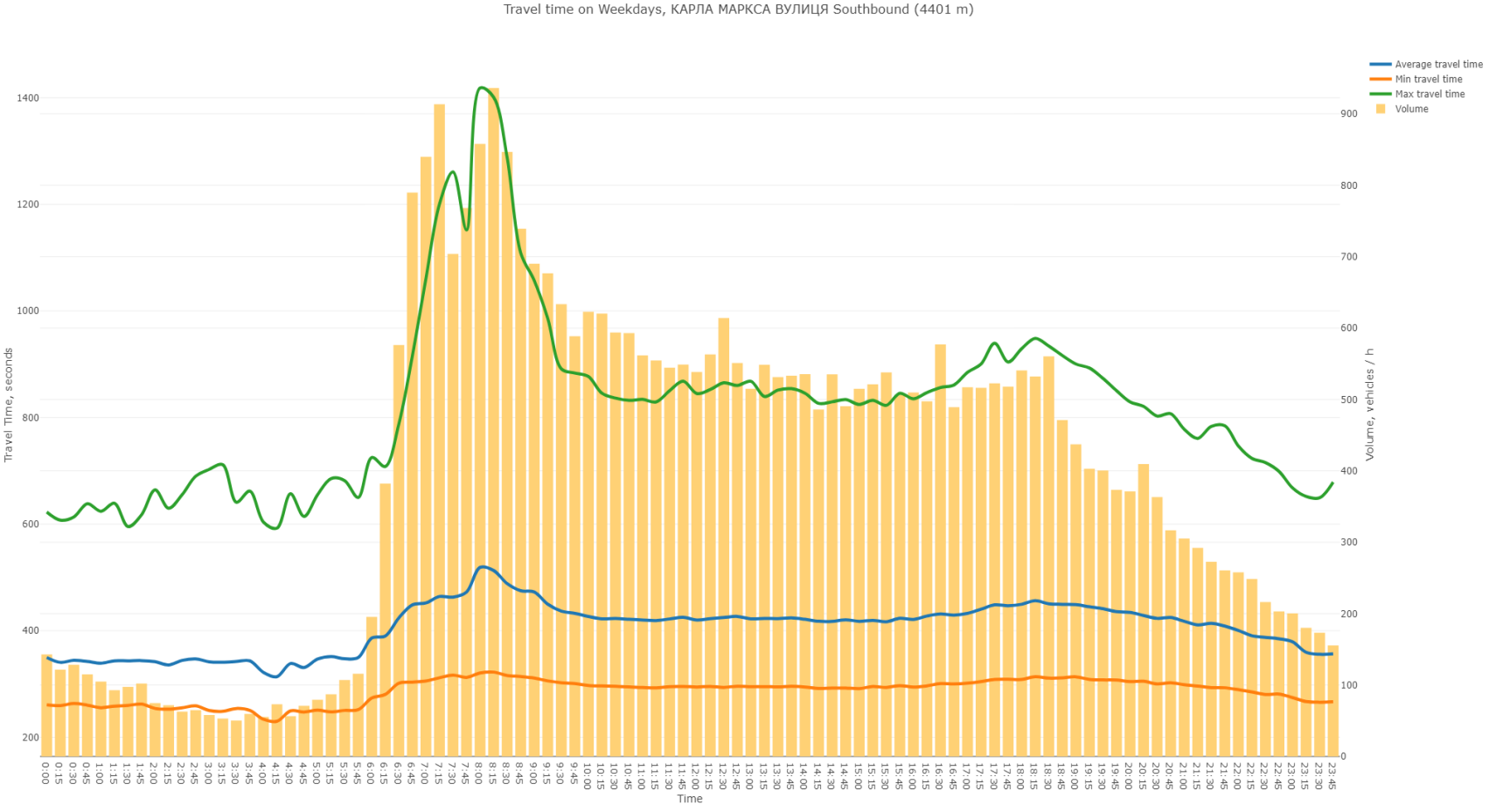
Intersectional saturation heatmap



Reference period

Weekdays from 6 AM to 9 PM

Travel time and volume





Hi-res dataset for mobility improvement analysis - 2023