



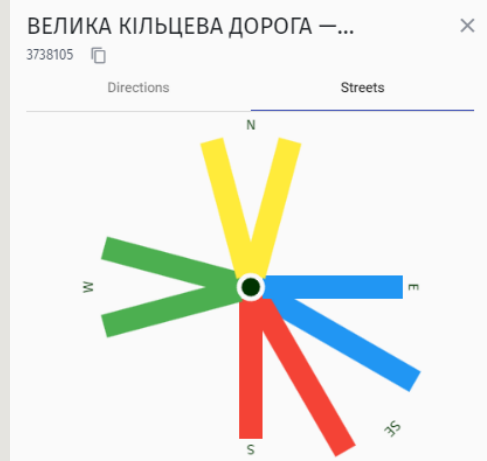
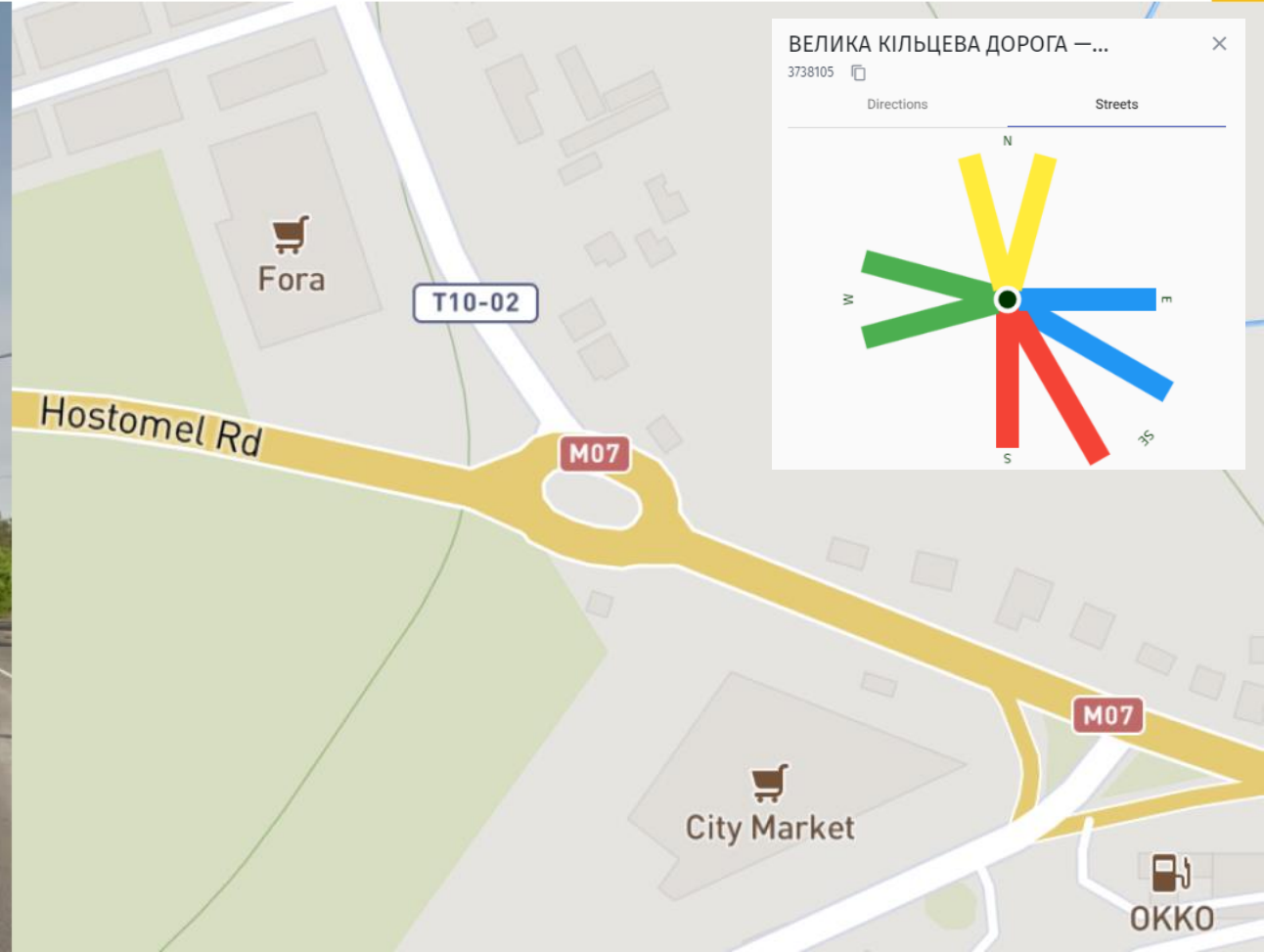
IRPIN MOBILITY IMPROVEMENT

Preliminary Intersectional analysis

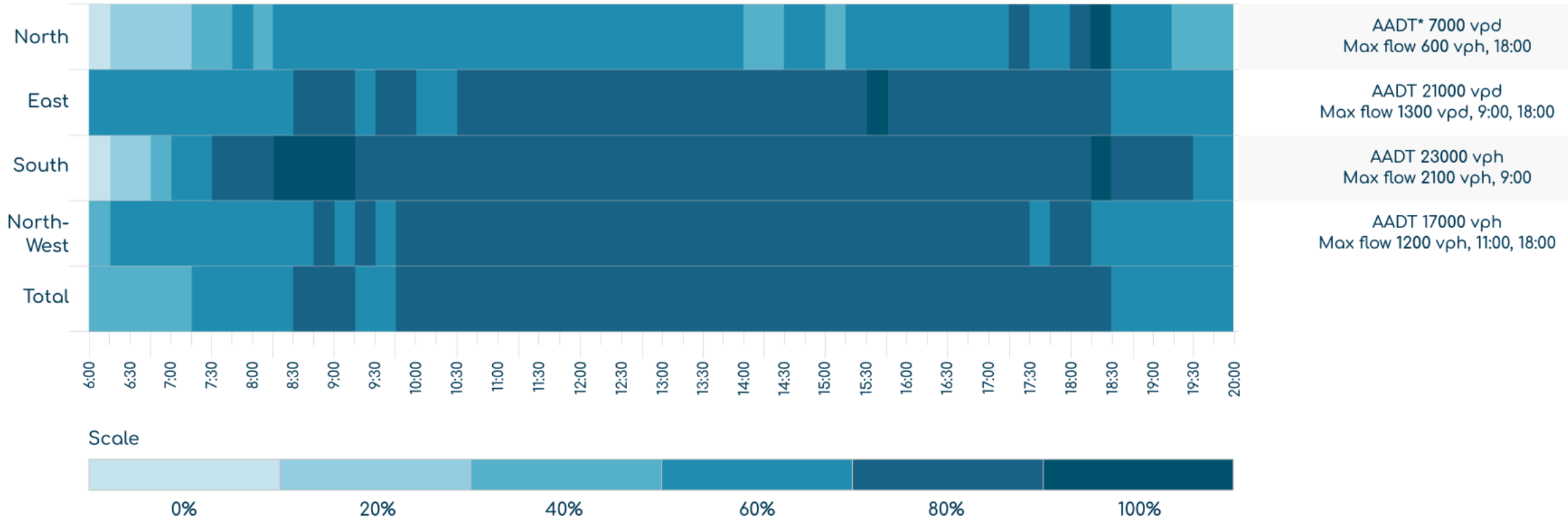
t:con

M07 - RING RD

Saturation/Delay analysis



Saturation heatmap



476 hpd
Cumulative delay



1304 \$/d
or 476,000 \$/year economical
damage

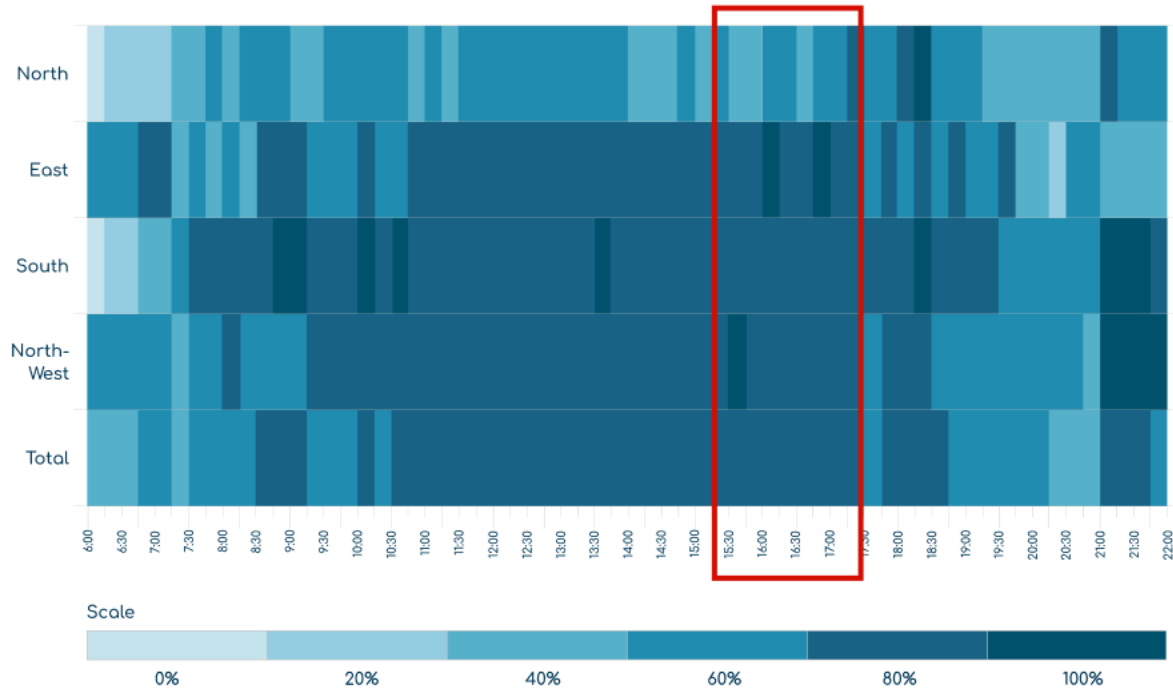


23 %
ASCT¹ potentially can provide 23% delay
decrease or save \$109,000 per year

1. AADT - Annual average daily traffic; 2. ASCT - Adaptive Signal Control Technology

Intraweek traffic patterns

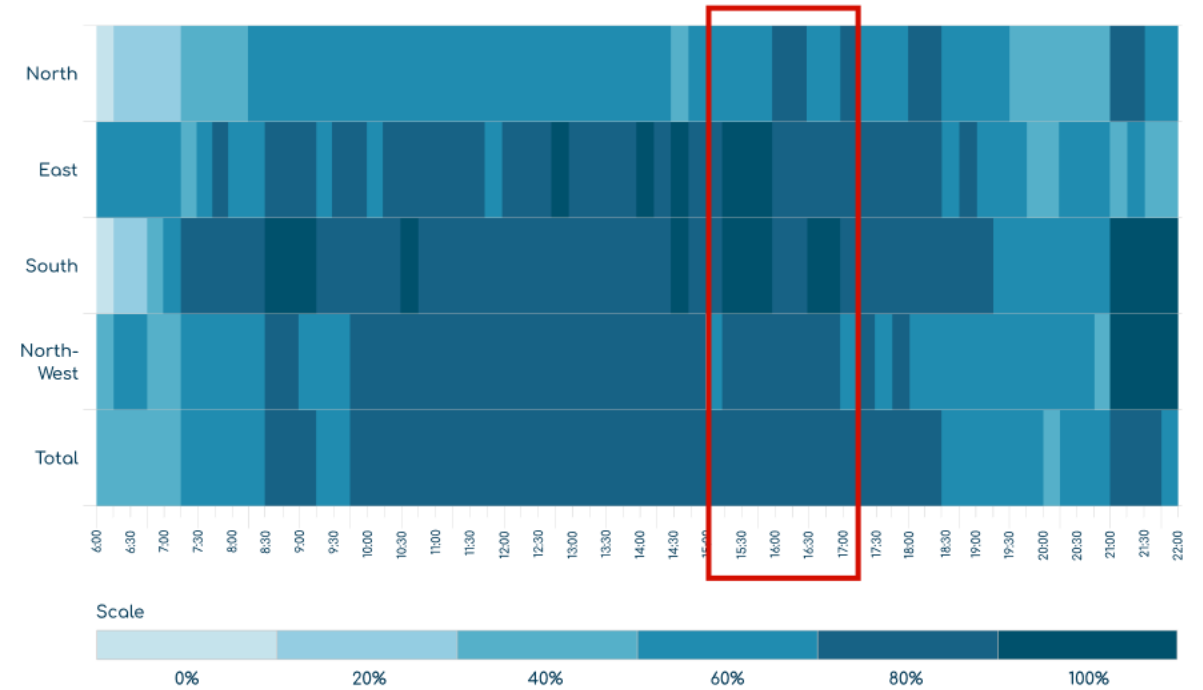
TUESDAY



Reference period - TUESDAY from 6 AM to 10 PM

Average speed gain - 0.00 %

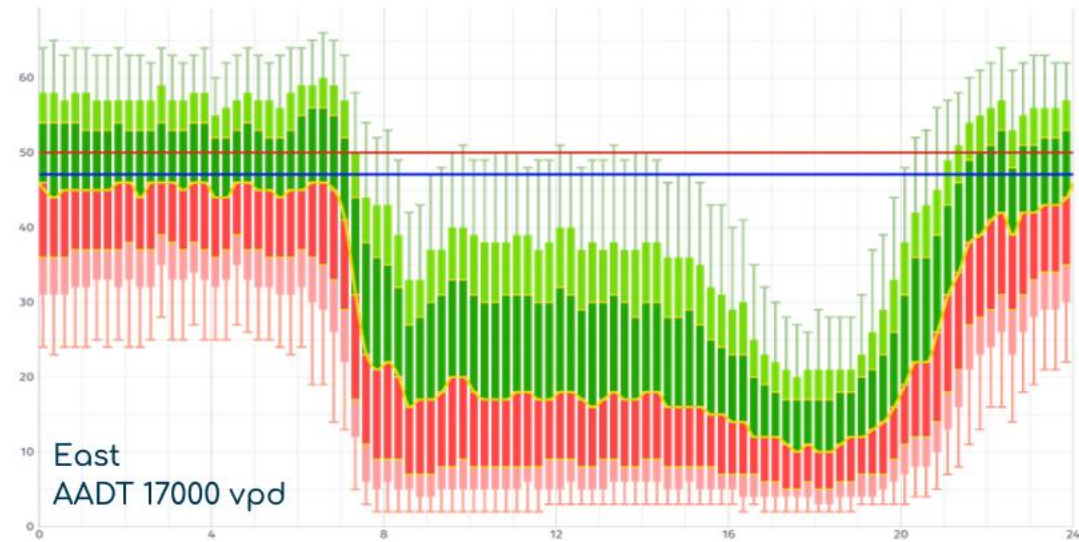
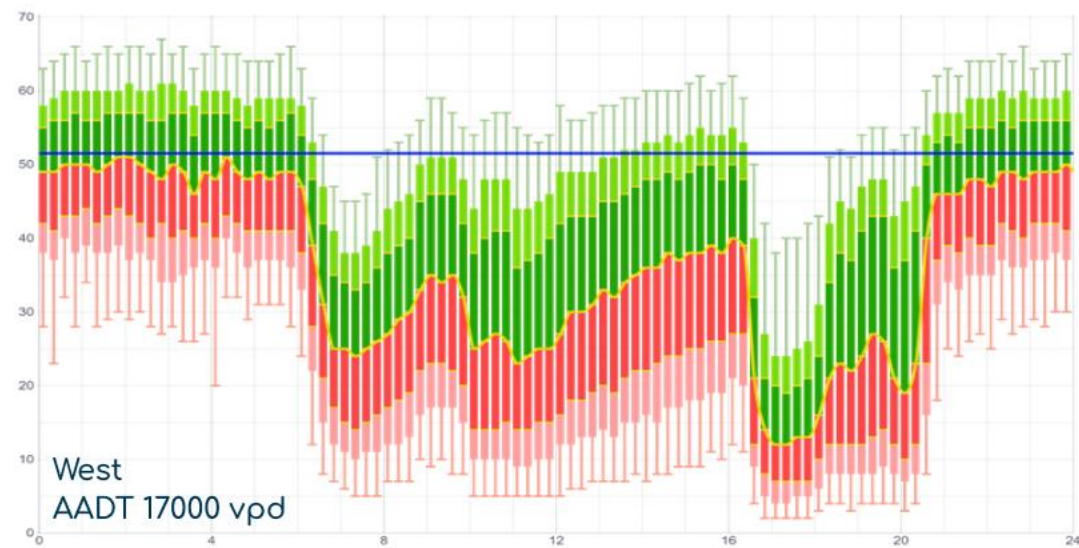
FRIDAY



Reference period - FRIDAY from 6 AM to 10 PM

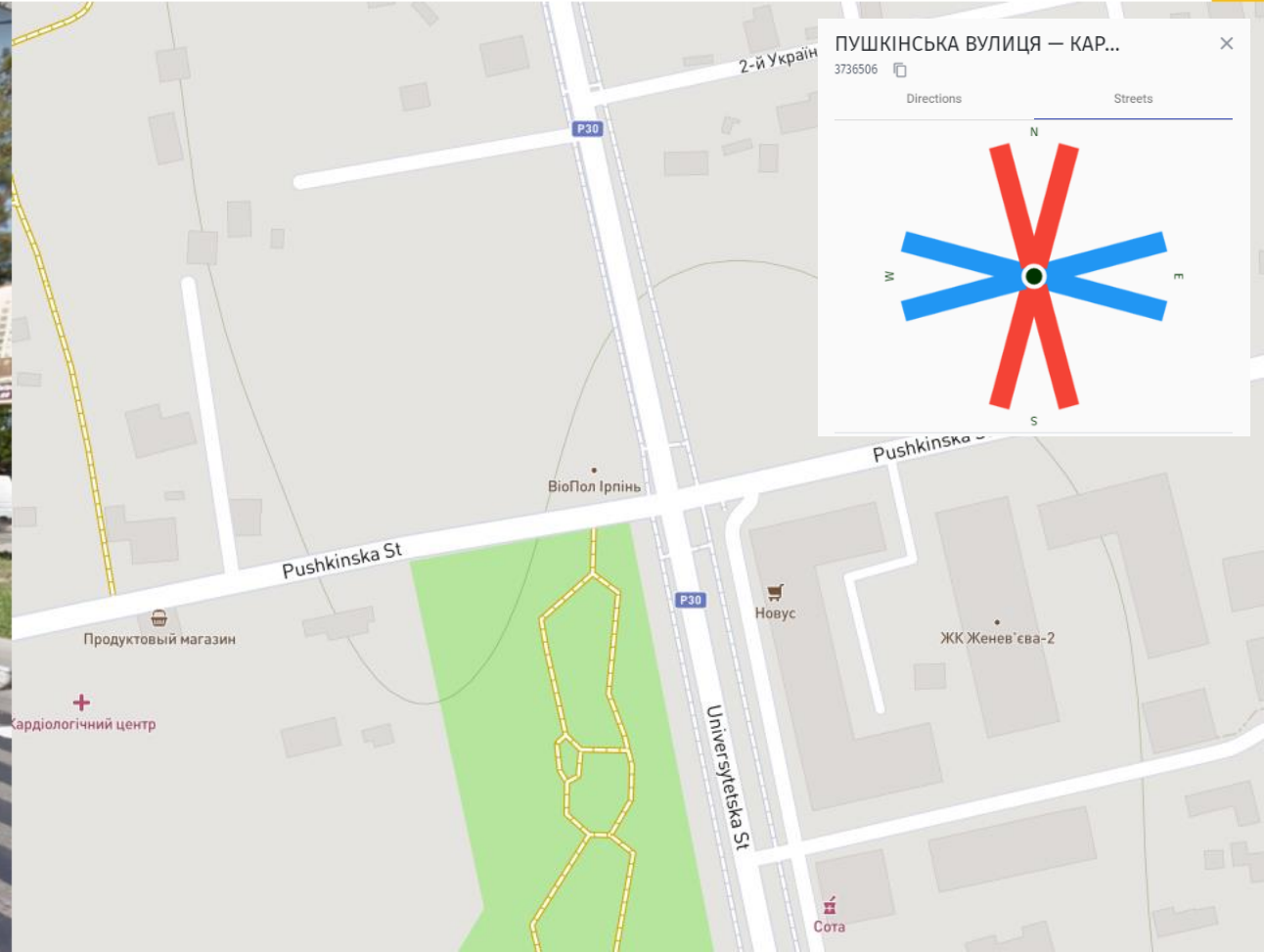
Average speed gain - 0.00 %

Speed patterns

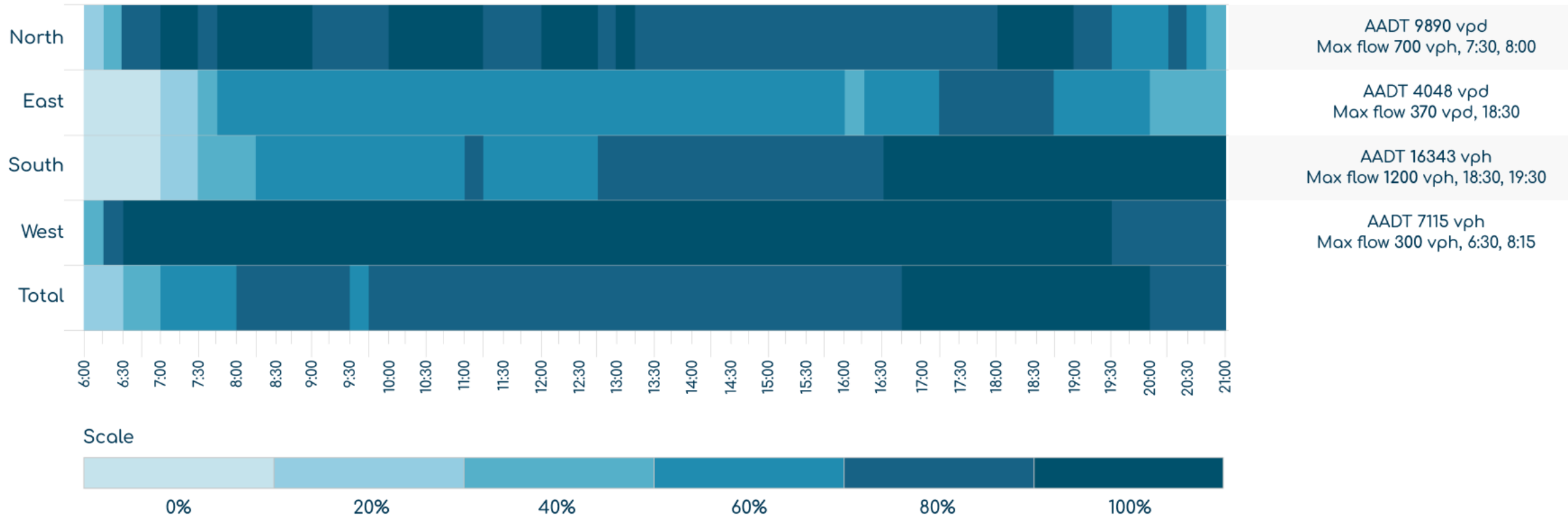


UNIVERSITETSKA ST - PUSHKINS'KA ST

Saturation/Delay analysis



Saturation heatmap



196 hpd

Cumulative delay



135 \$/d

or 49,420 \$/year economical damage

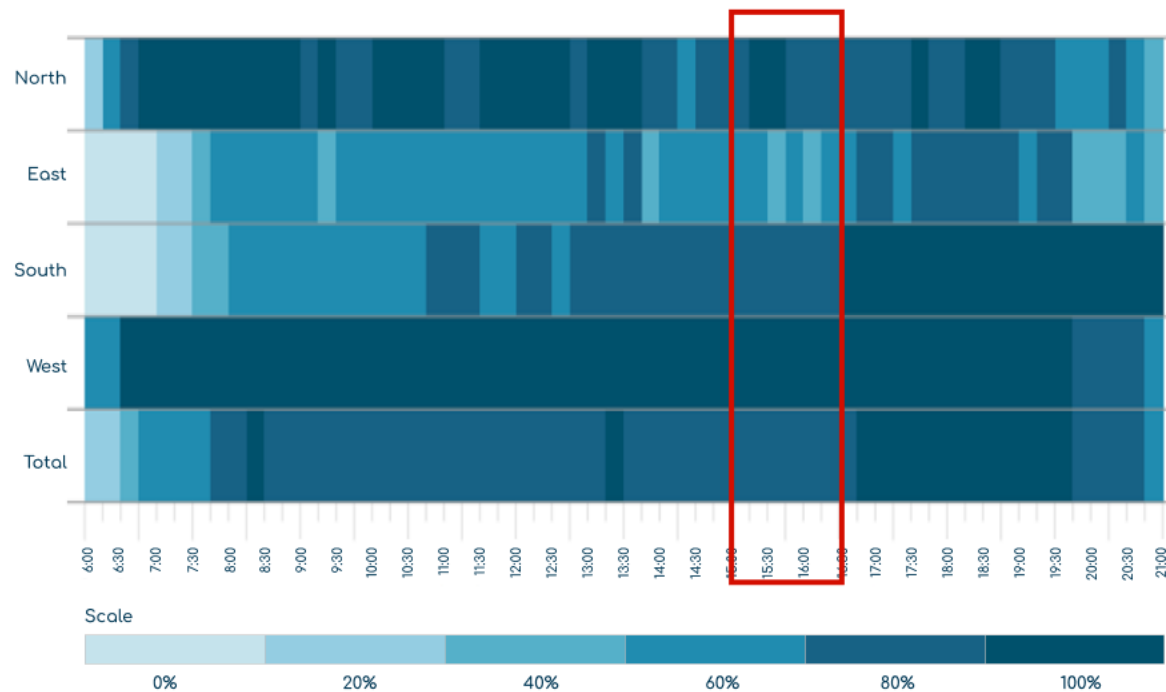


30 %

ASCT potentially can provide 30% delay decrease or save \$14,826 per year

Intraweek traffic patterns

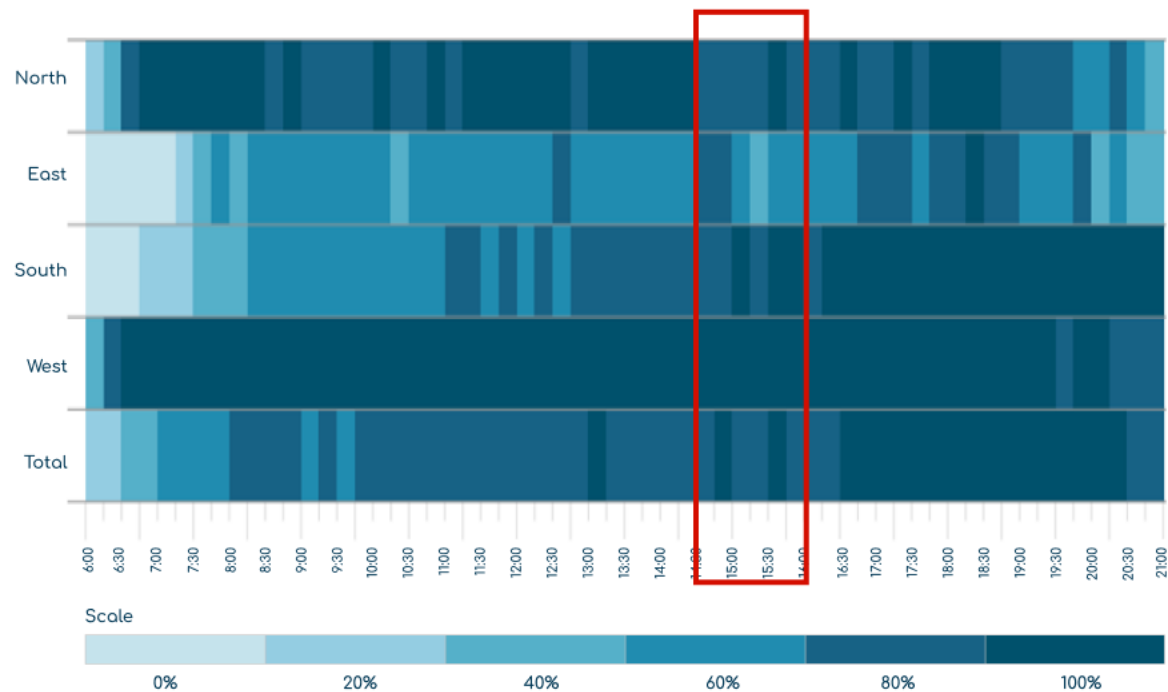
TUESDAY



Reference period - TUESDAY from 6 AM to 9 PM

Average speed gain - 0.00 %

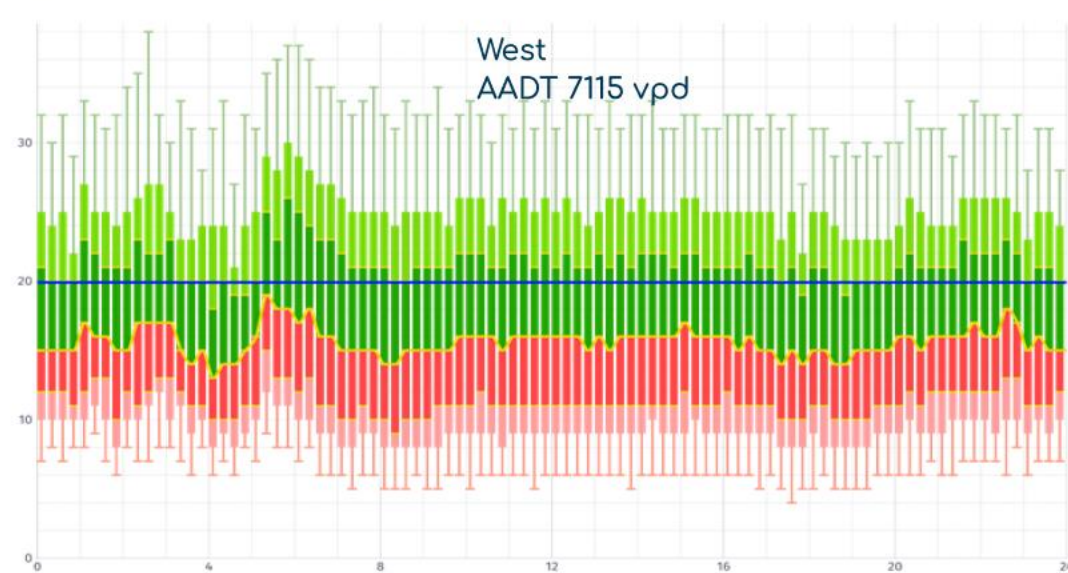
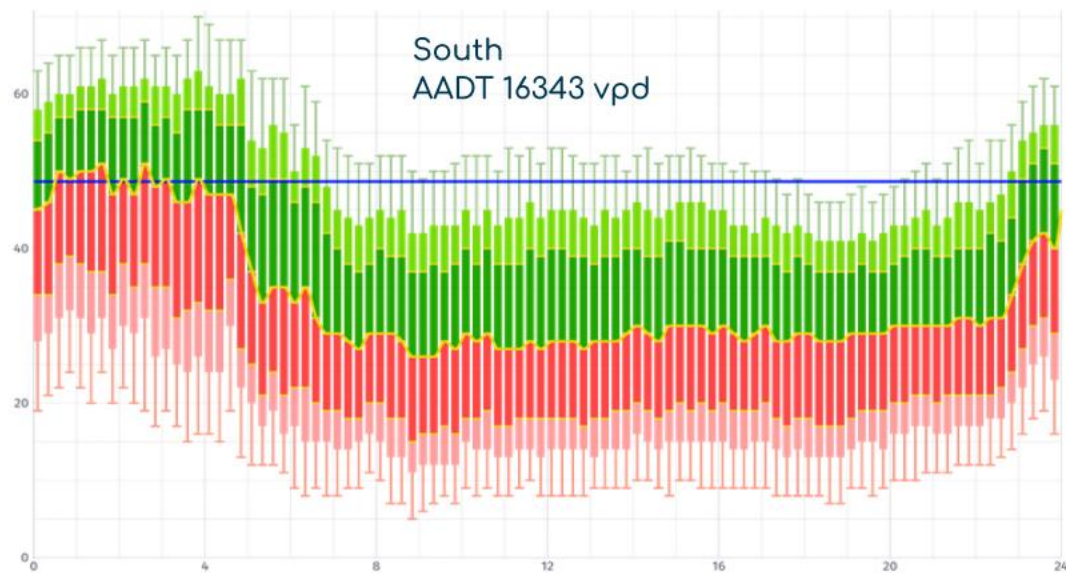
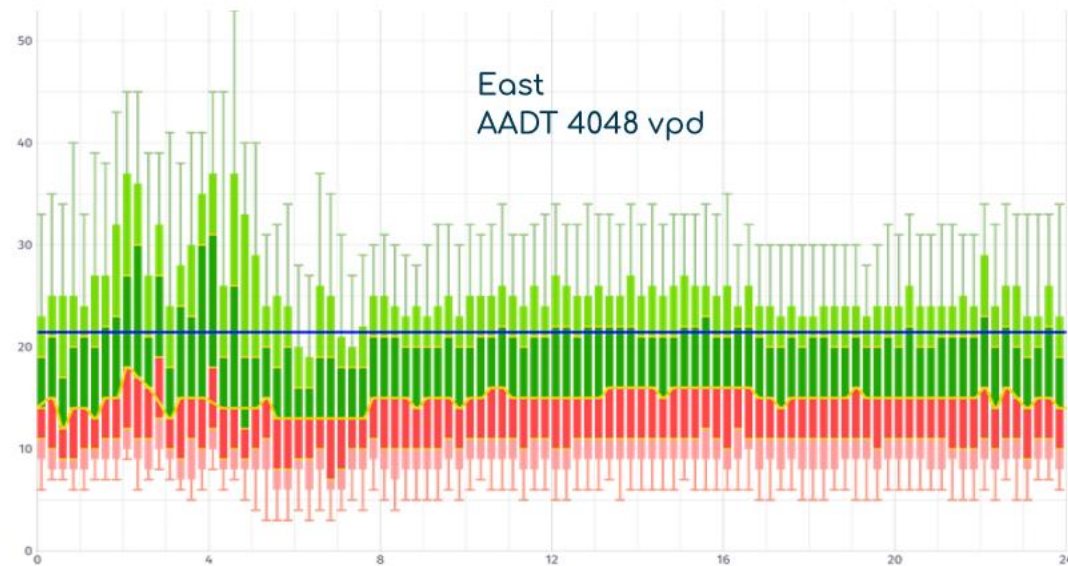
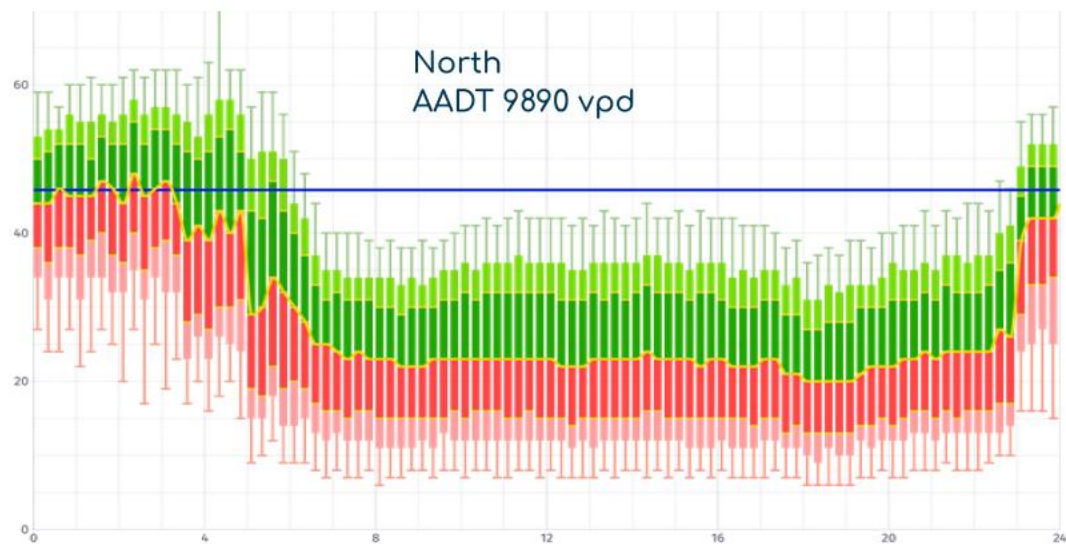
FRIDAY



Reference period - FRIDAY from 6 AM to 9 PM

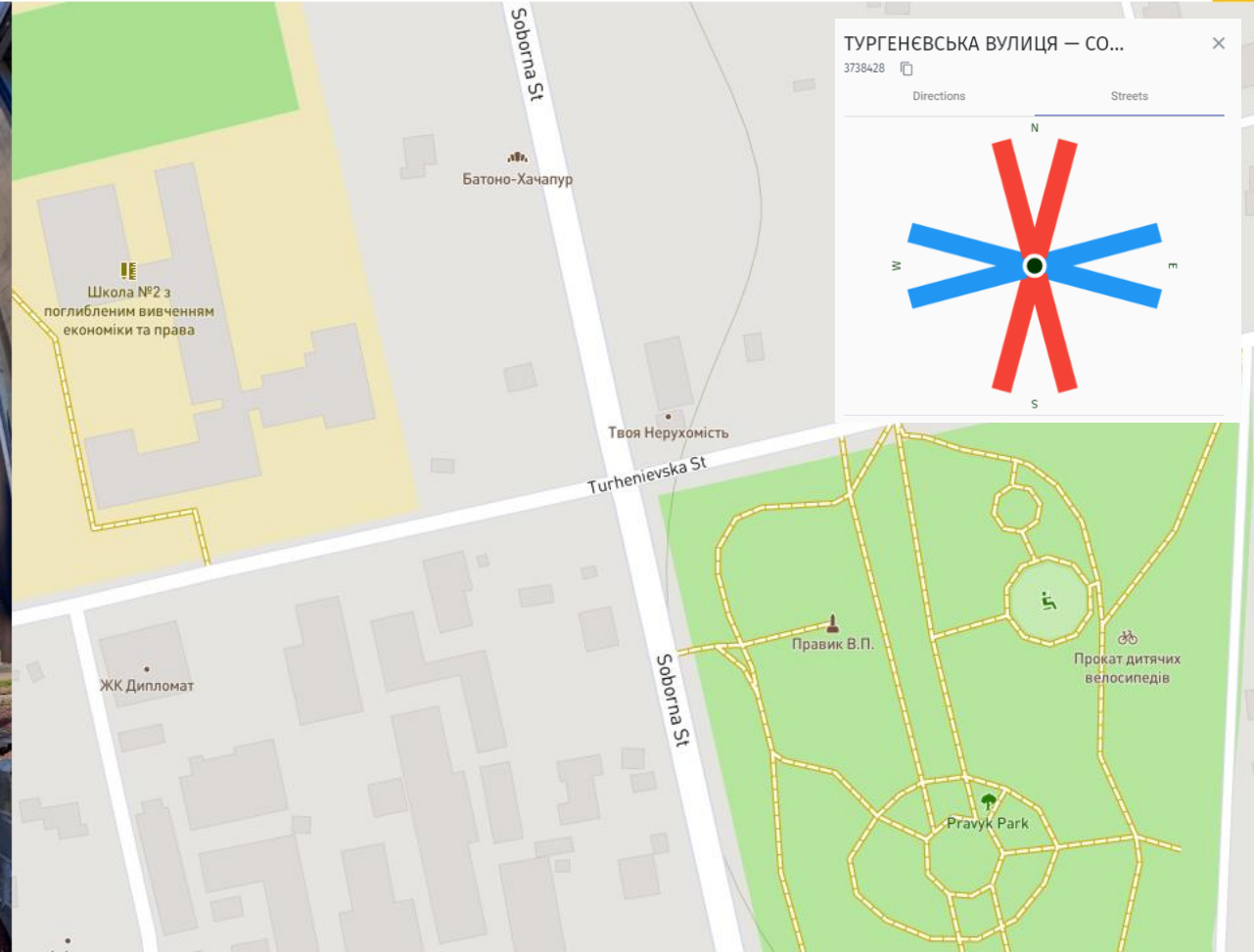
Average speed gain - 0.00 %

Speed patterns

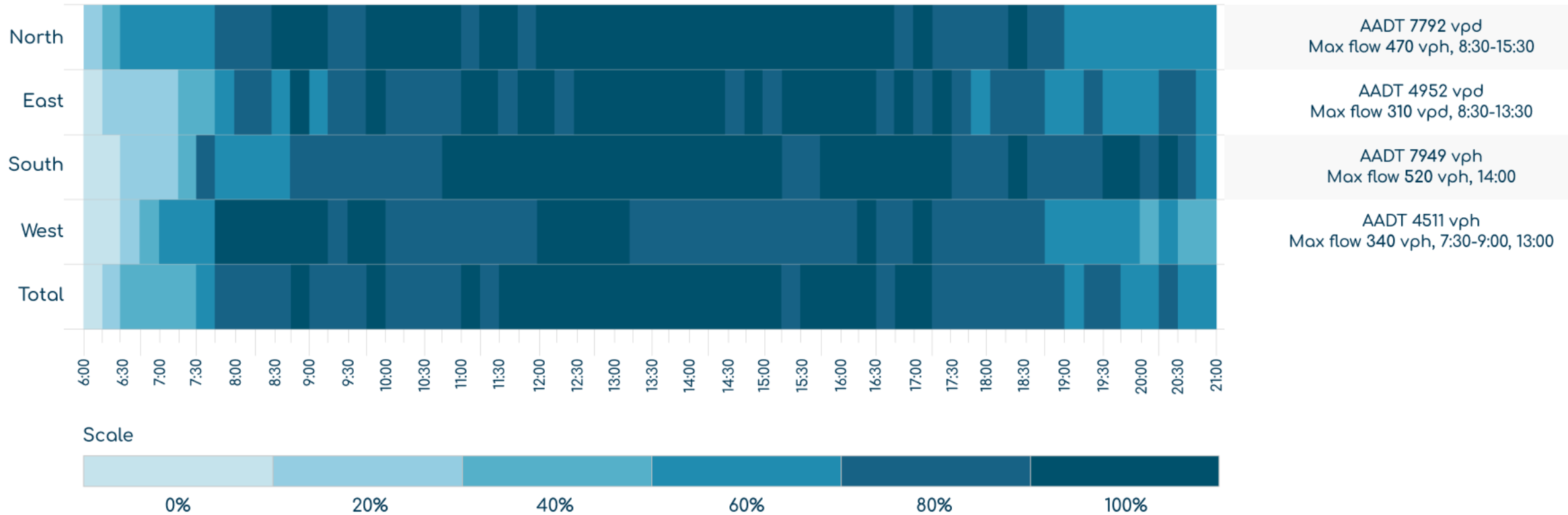


SOBORNA ST- TURHENIVSKA ST

Saturation/Delay analysis



Saturation heatmap



151 hpd
Cumulative delay



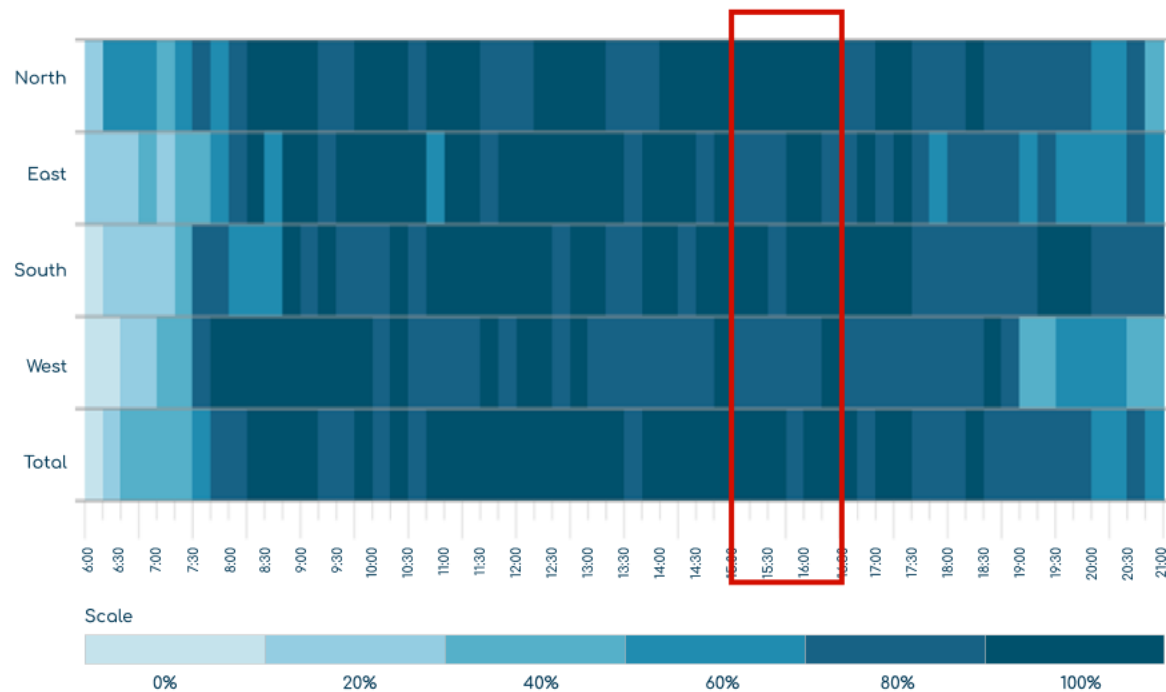
104 \$/d
or 37,900 \$/year economical damage



30 %
ASCT potentially can provide 30% delay decrease or save \$11,370 per year

Intraweek traffic patterns

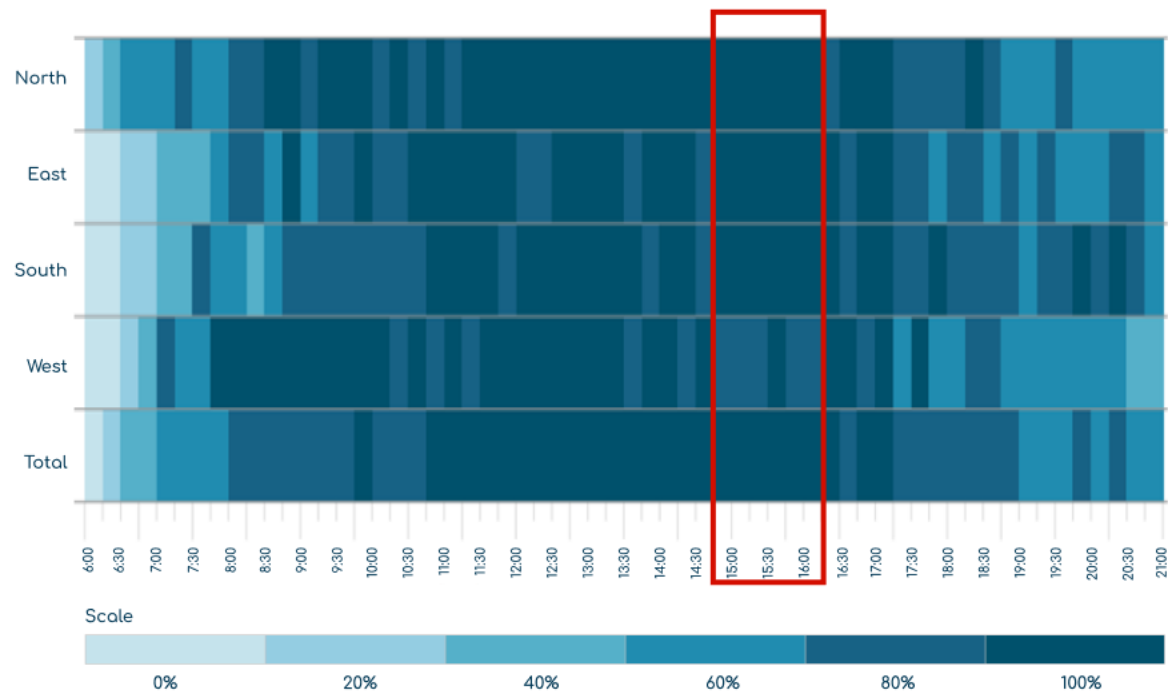
TUESDAY



Reference period - TUESDAY from 6 AM to 9 PM

Average speed gain - 0.00 %

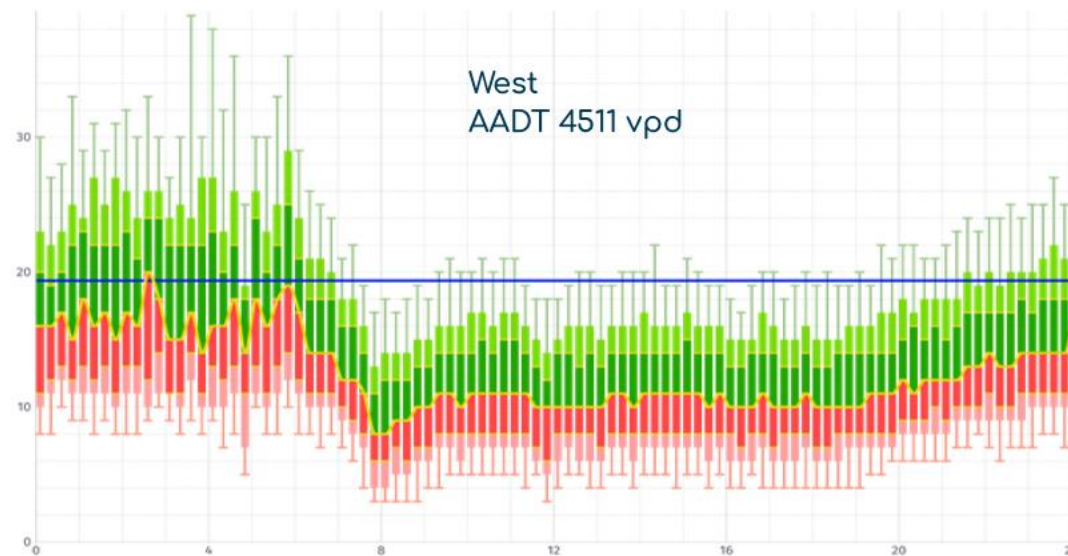
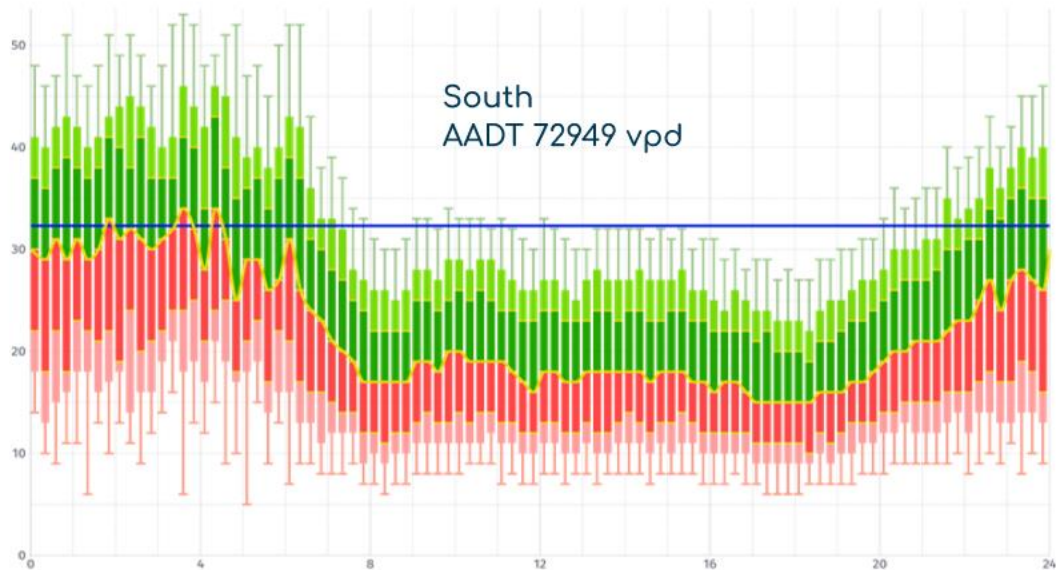
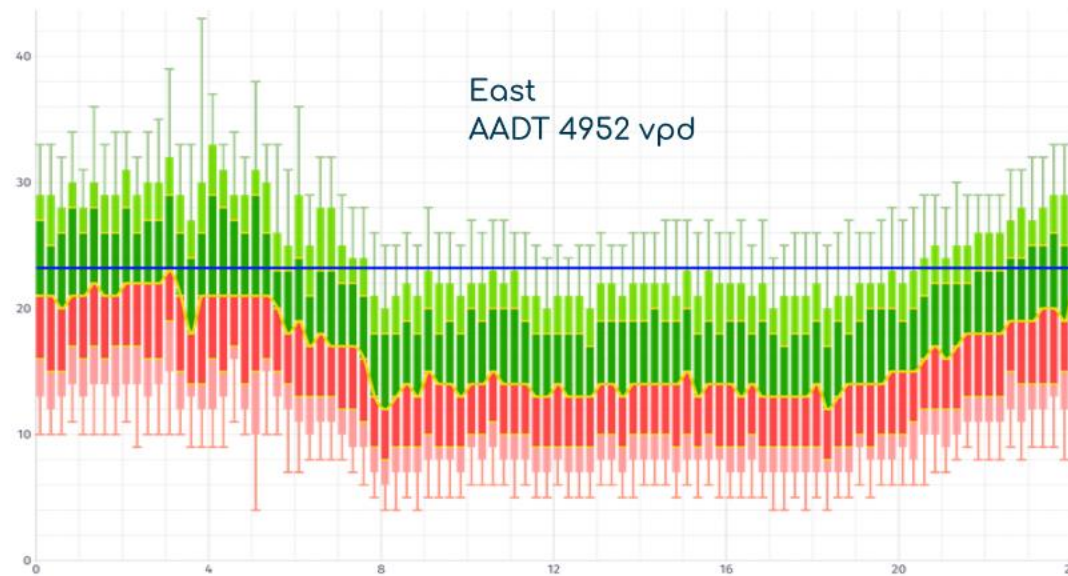
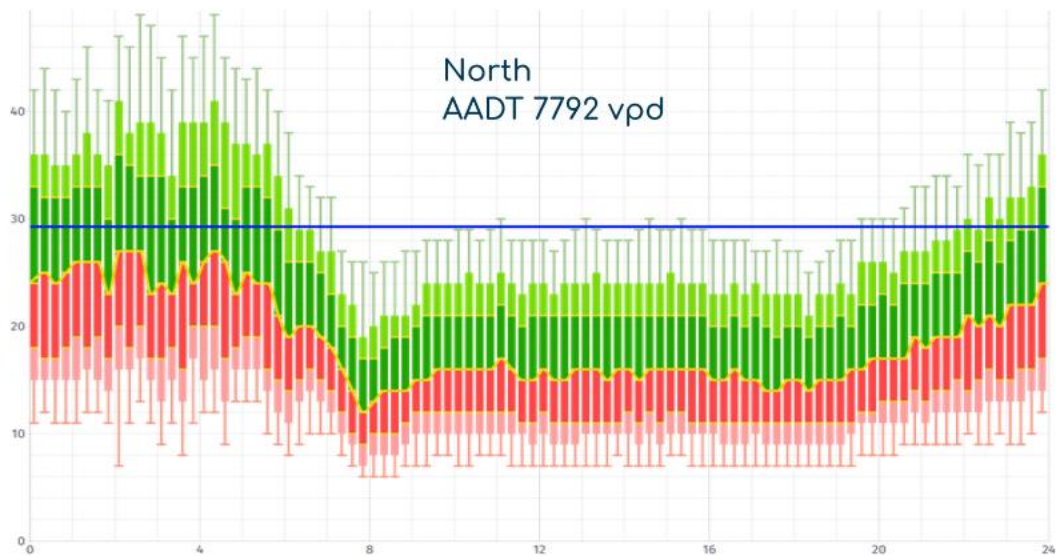
FRIDAY



Reference period - FRIDAY from 6 AM to 9 PM

Average speed gain - 0.00 %

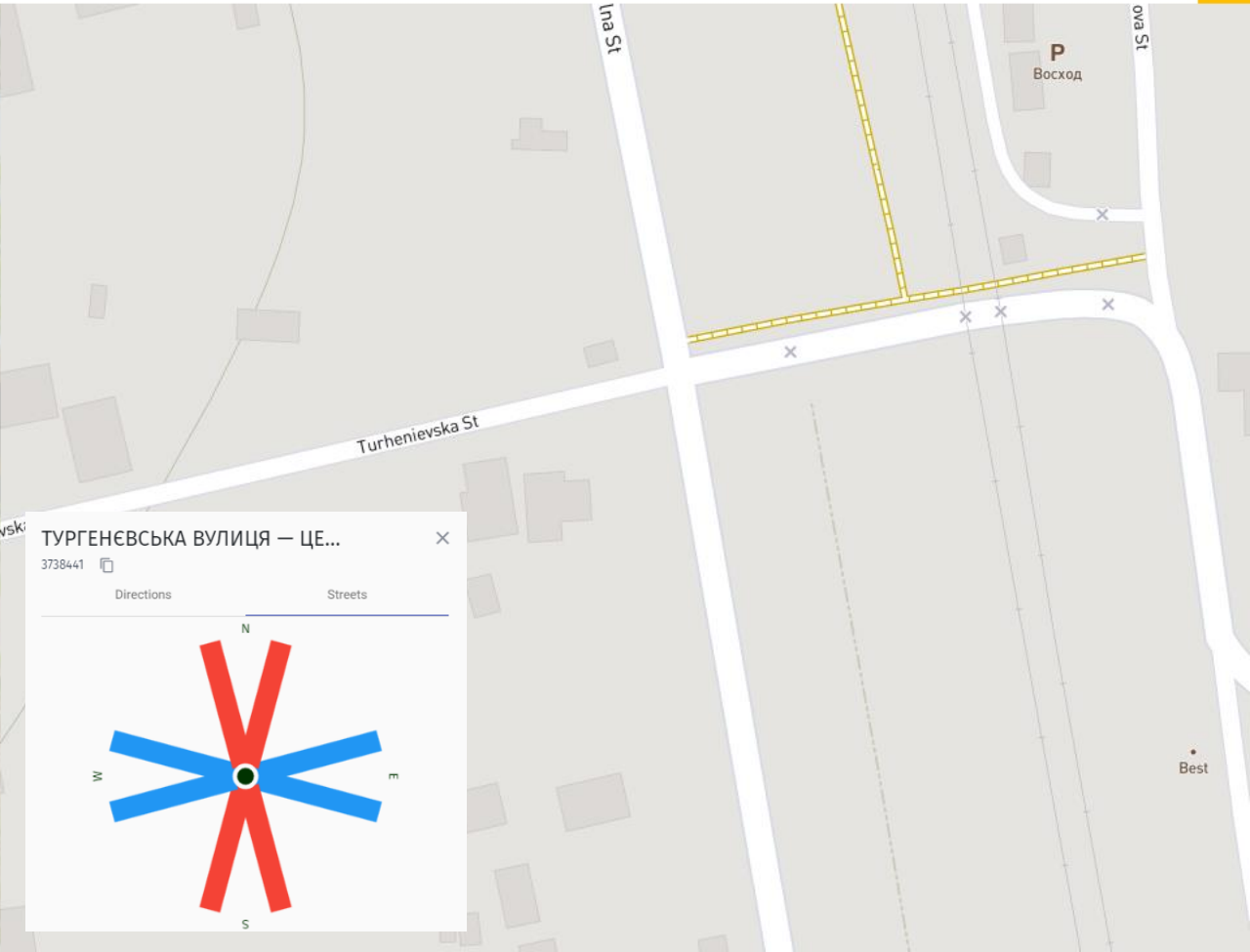
Speed patterns



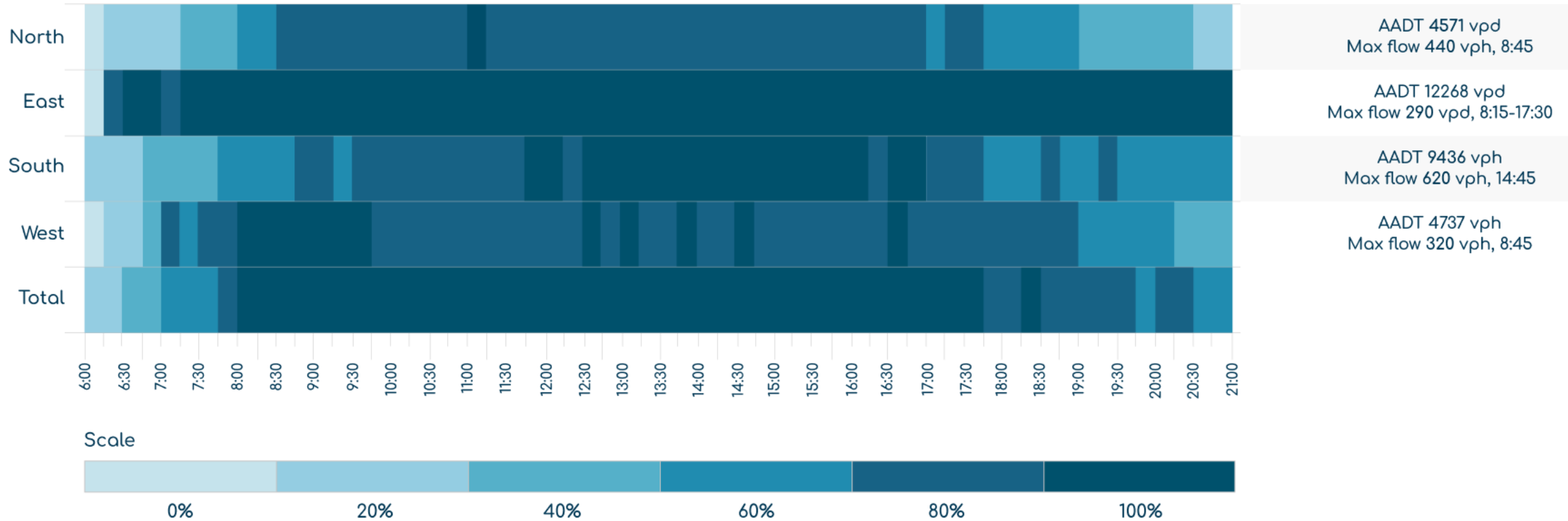
- Maximum
95th Percentile
- 85th Percentile
- Third quartile (Q3)
75th Percentile
- Median (Q2)
50th Percentile
- First quartile (Q1)
25th Percentile
- 15th Percentile
- Minimum
5th Percentile
- Free flow speed
- Filtered average speed
- Speed limit

TSENTRALNA ST - TURHENIVSKA ST

Saturation/Delay analysis



Saturation heatmap



192 hpd
Cumulative delay



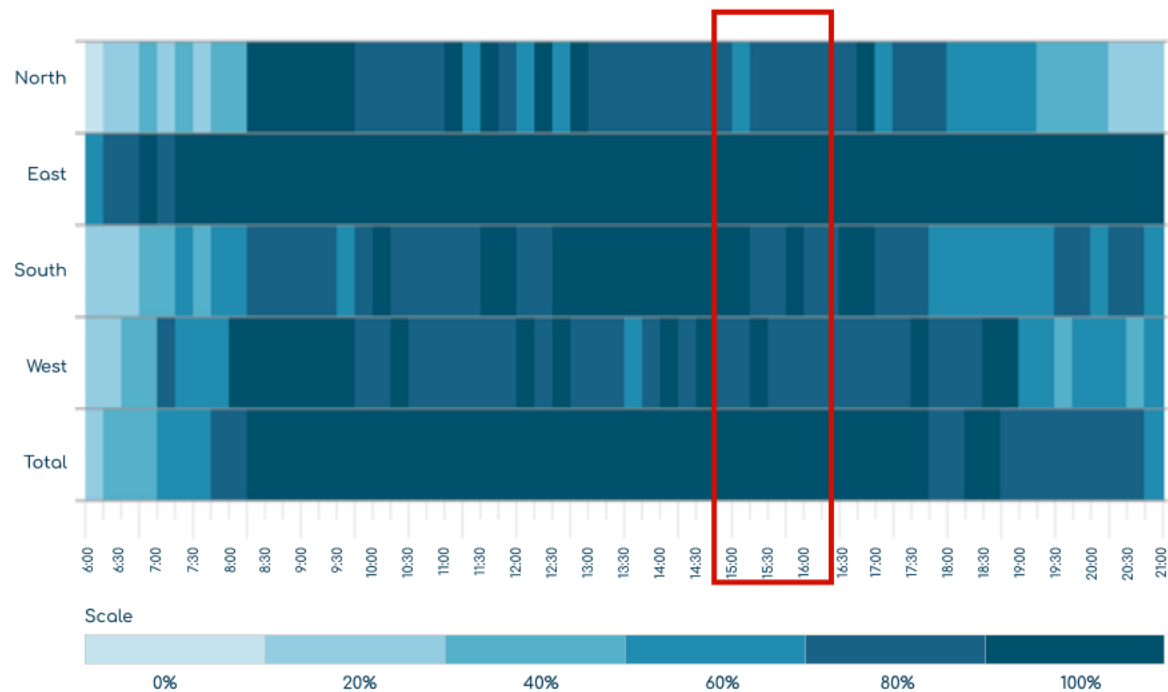
154 \$/d
or 56,300 \$/year economical damage



30 %
ASCT potentially can provide 30% delay decrease or save \$15,890 per year

Intraweek traffic patterns

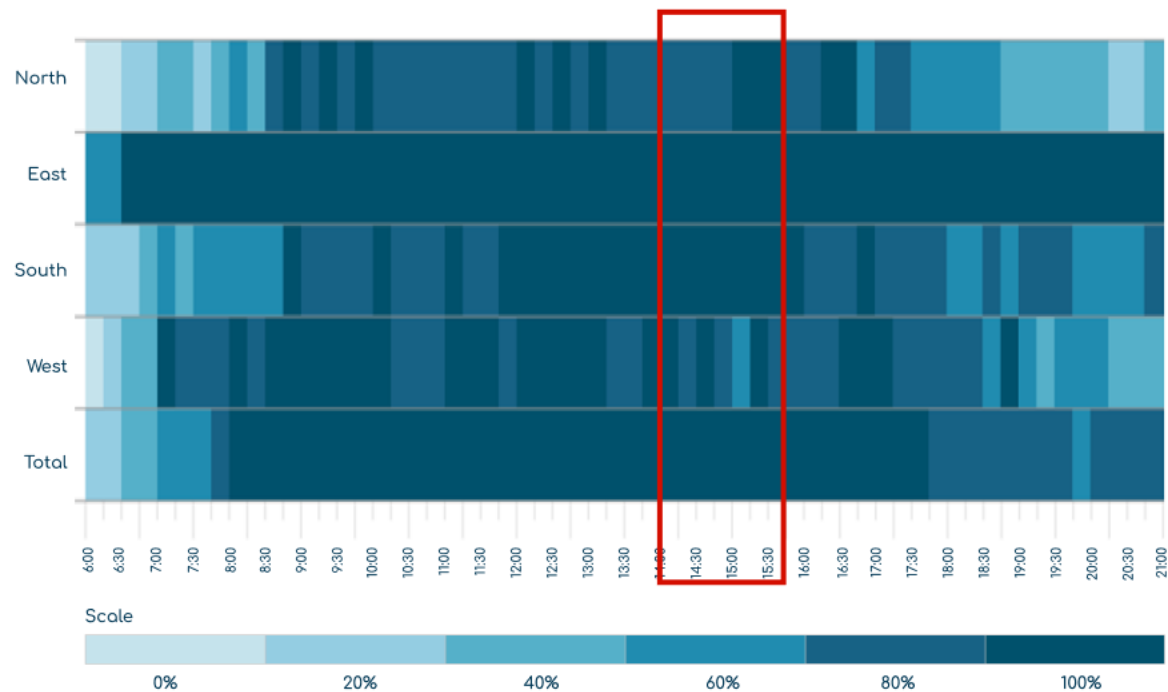
TUESDAY



Reference period - TUESDAY from 6 AM to 9 PM

Average speed gain - 0.00 %

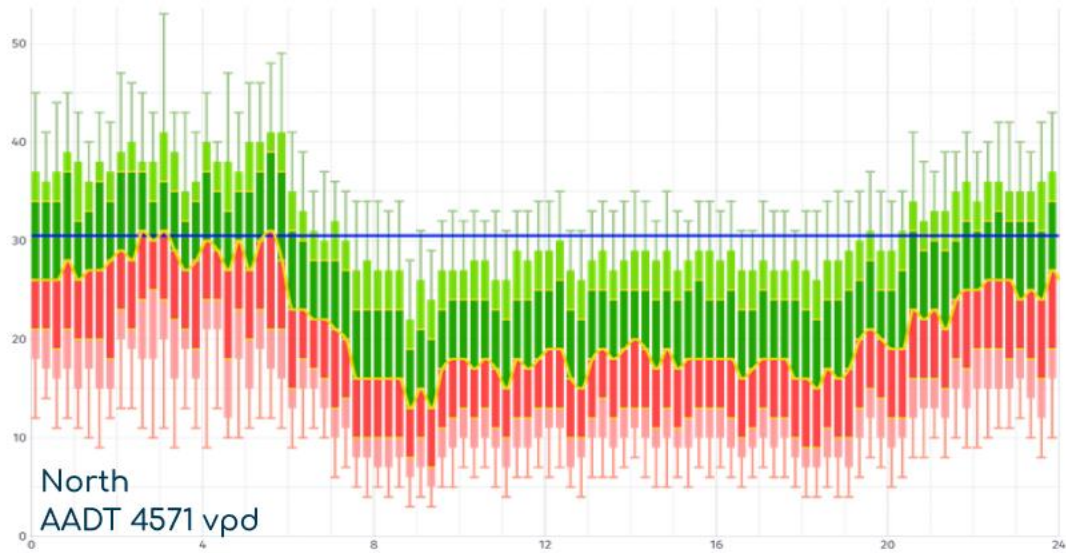
FRIDAY



Reference period - FRIDAY from 6 AM to 9 PM

Average speed gain - 0.00 %

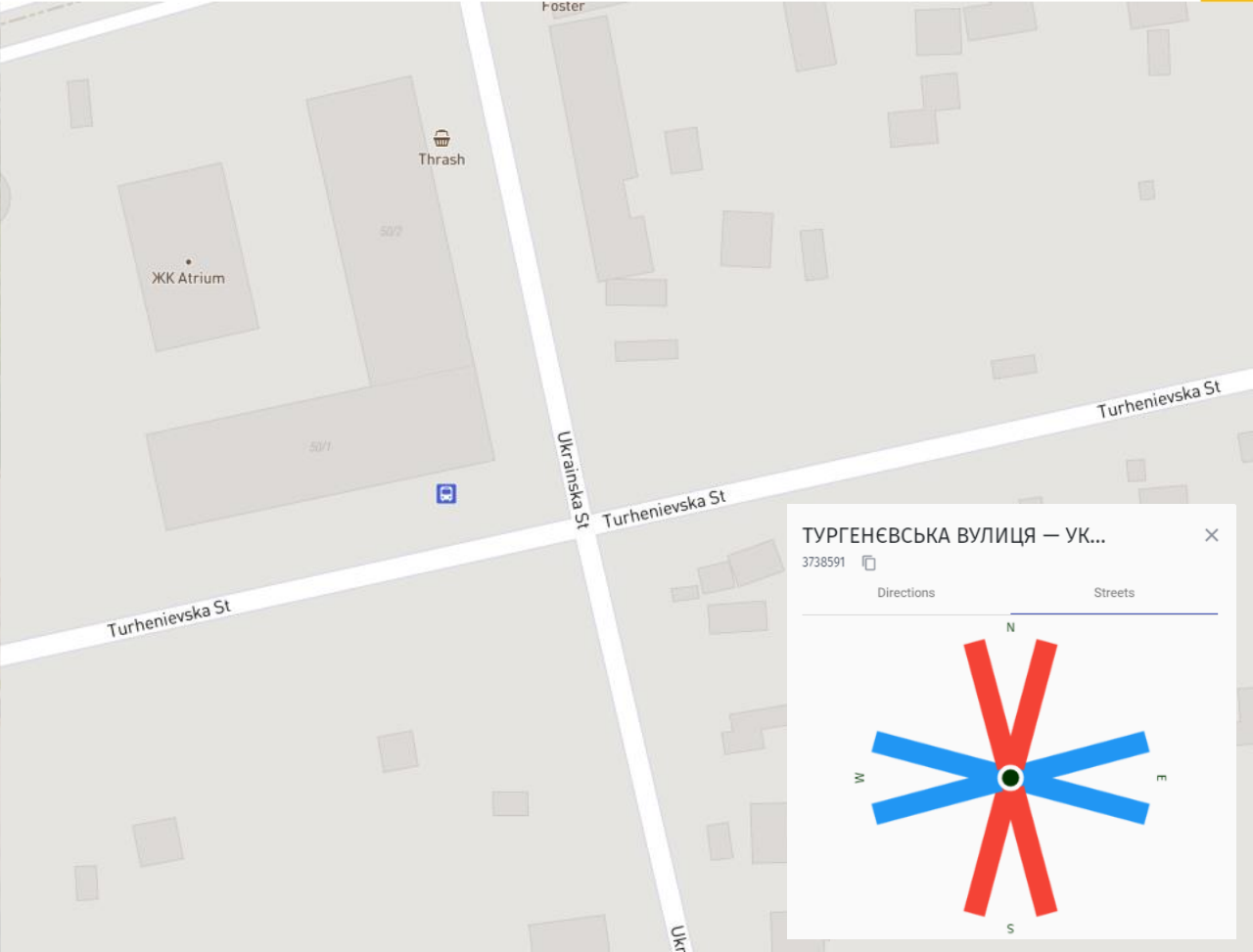
Speed patterns



- Maximum
- 95th Percentile
- 85th Percentile
- Third quartile (Q3)
- 75th Percentile
- Median (Q2)
- 50th Percentile
- First quartile (Q1)
- 25th Percentile
- 15th Percentile
- Minimum
- 5th Percentile
- Free flow speed
- Filtered average speed
- Speed limit

UKRAINS'KA ST - TURHENIVSKA ST

Saturation/Delay analysis



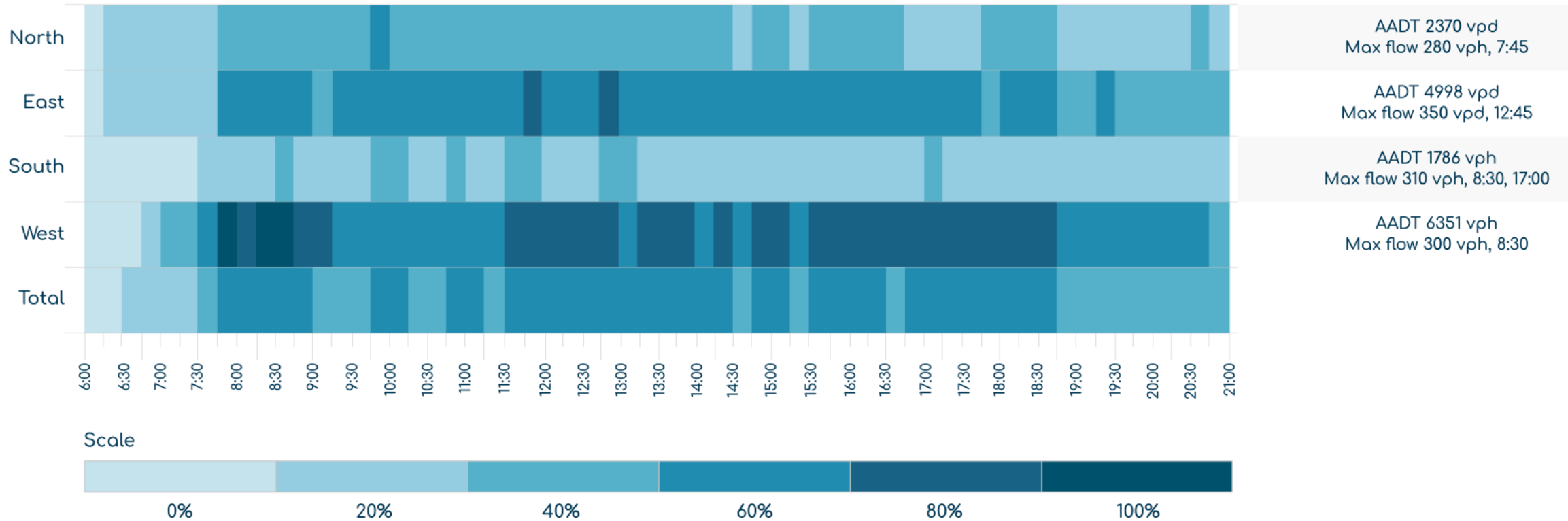
ТУРГЕНІВСЬКА ВУЛИЦЯ — УК...

3738591

Directions Streets

Picture Source - Google Maps

Saturation heatmap



48 hpd
Cumulative delay



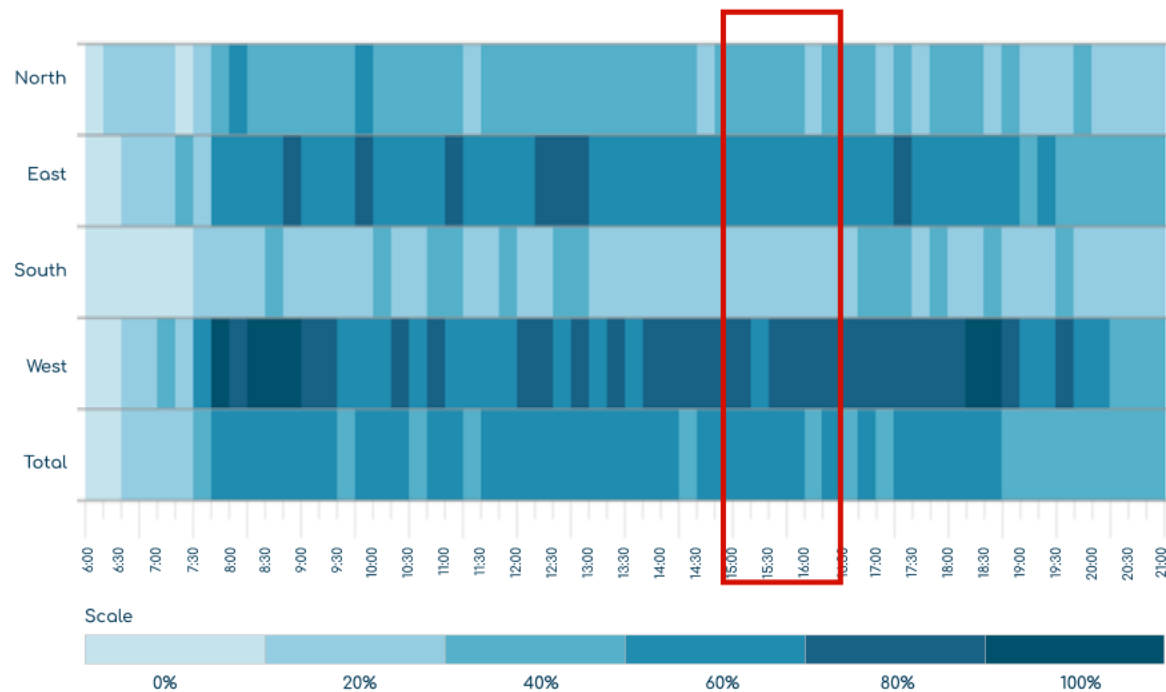
72 \$/d
or 26,300 \$/year economical damage



40 %
ASCT potentially can provide 40% delay decrease or save \$10,520 per year

Intraweek traffic patterns

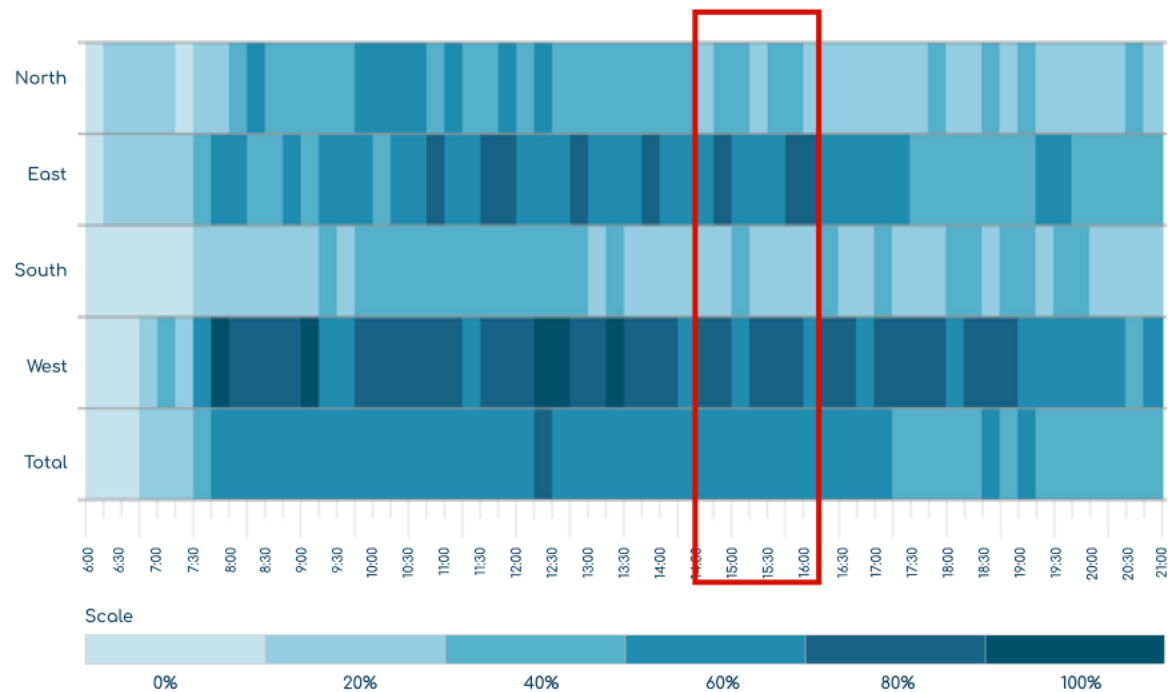
TUESDAY



Reference period - TUESDAY from 6 AM to 9 PM

Average speed gain - 0.00 %

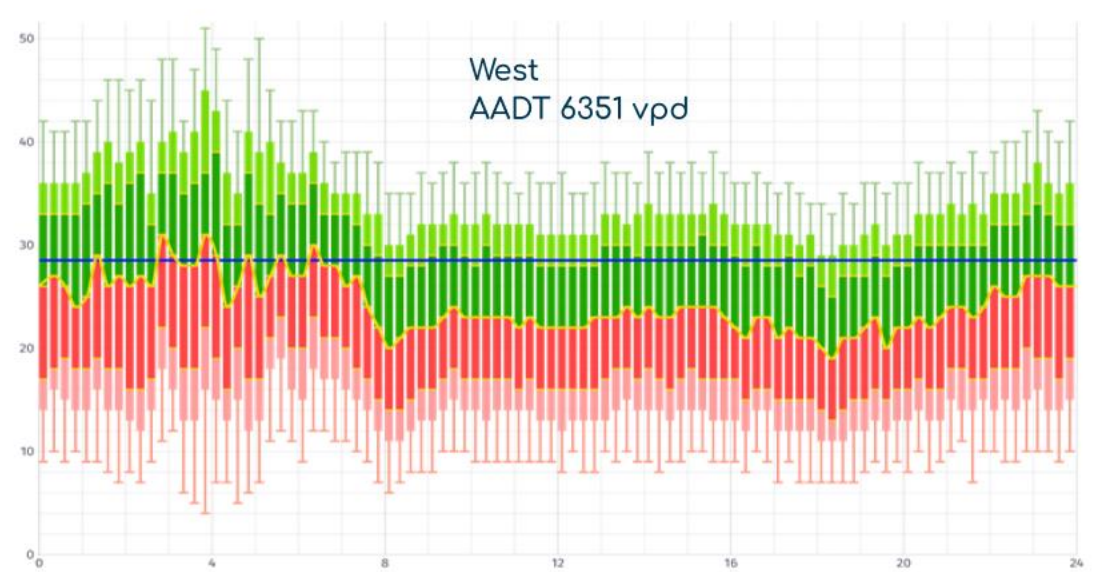
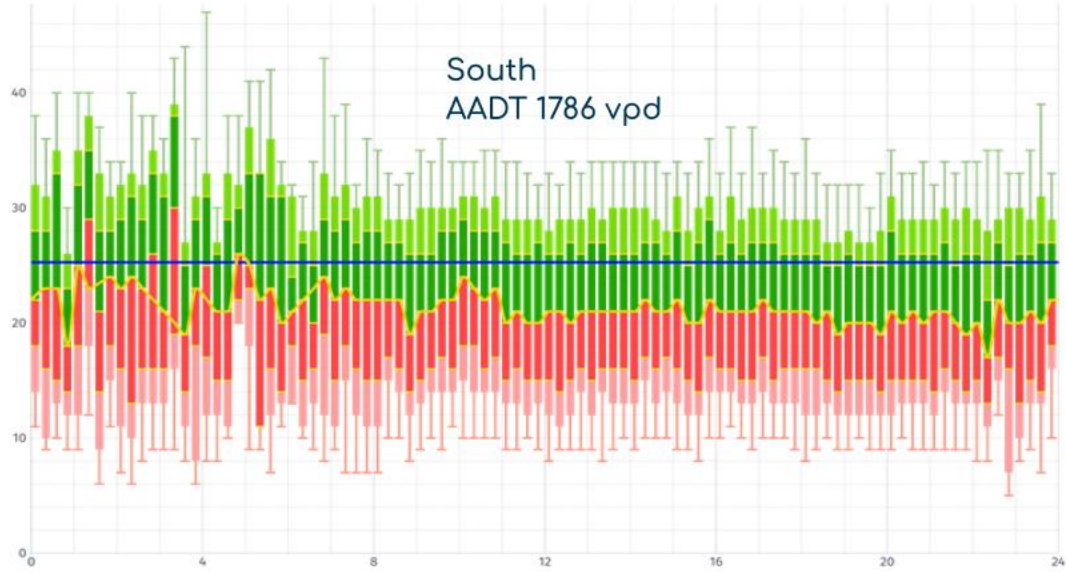
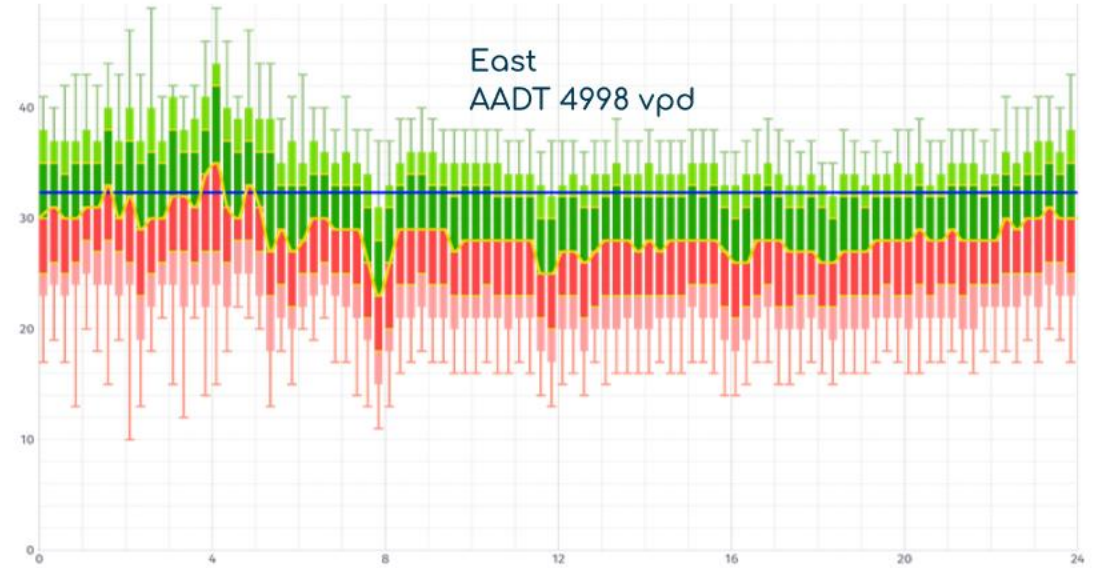
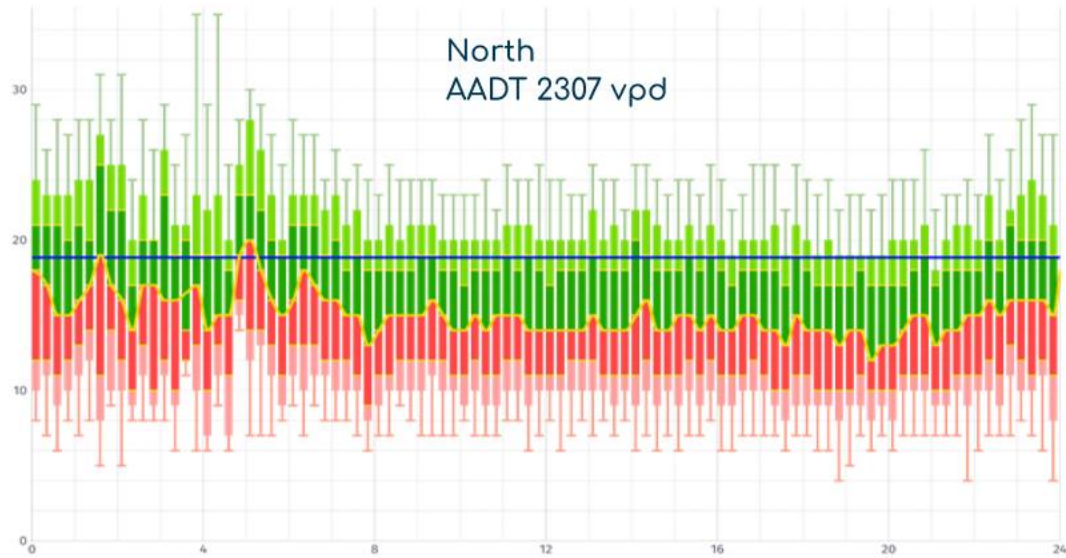
FRIDAY



Reference period - FRIDAY from 6 AM to 9 PM

Average speed gain - 0.00 %

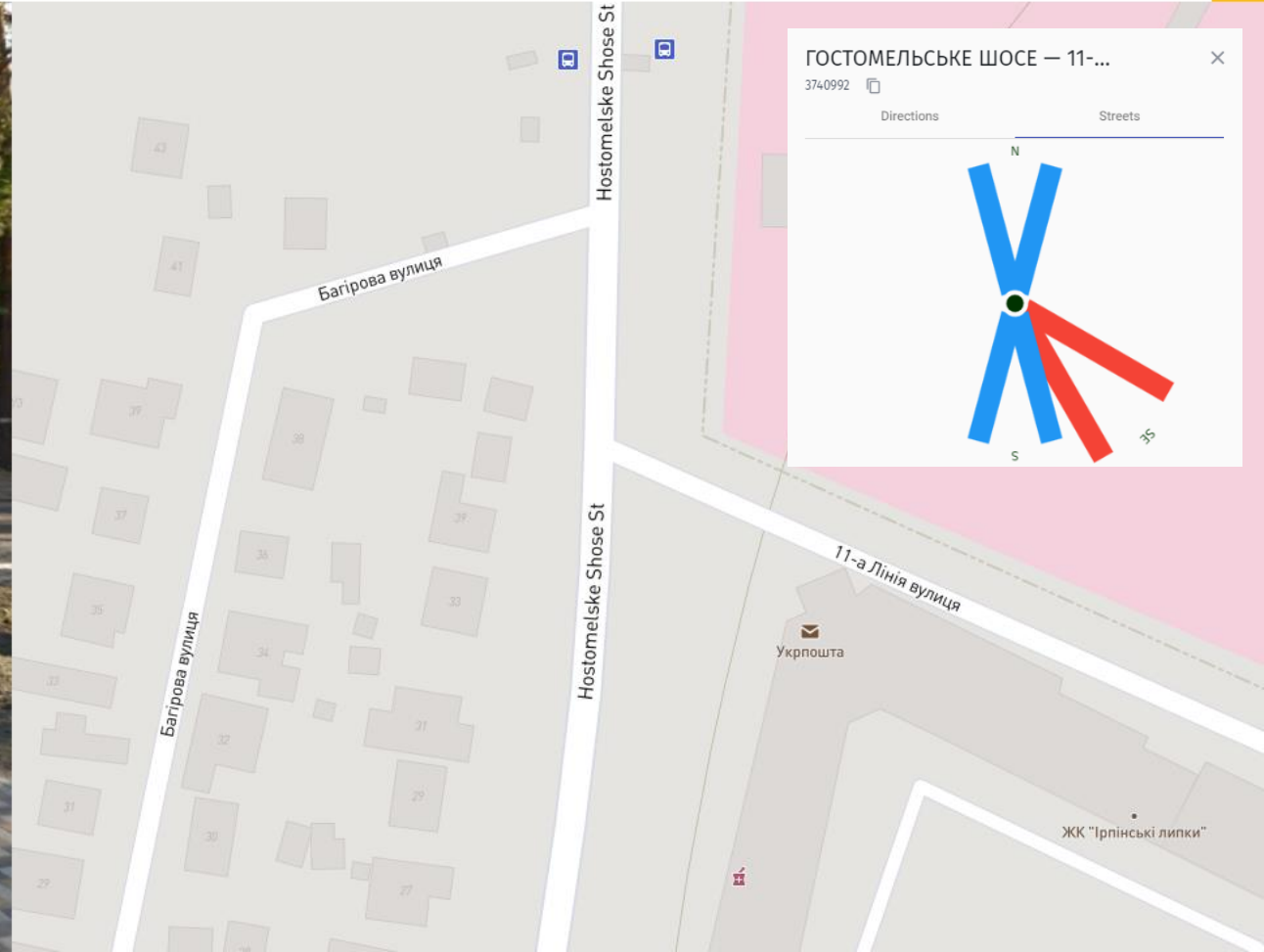
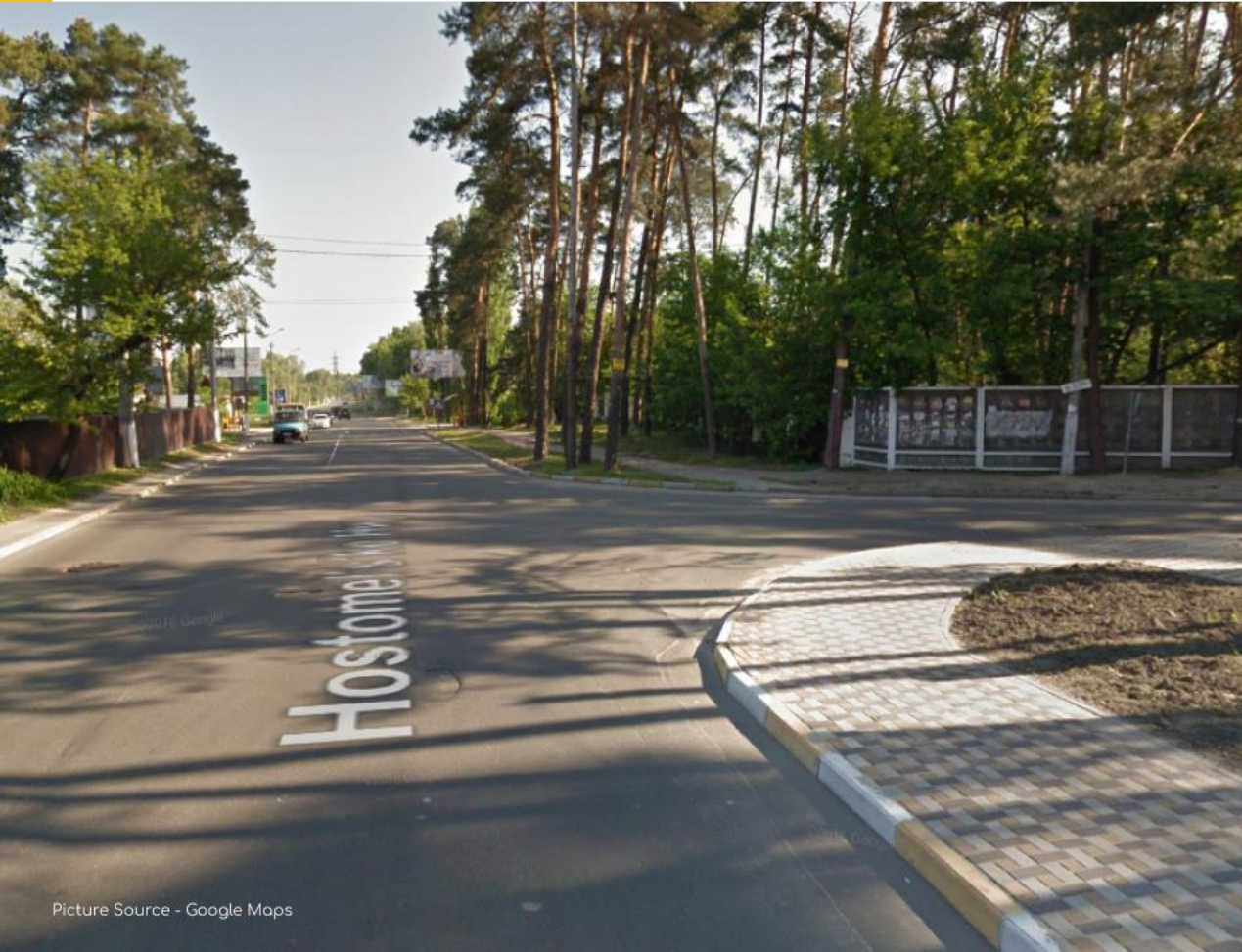
Speed patterns



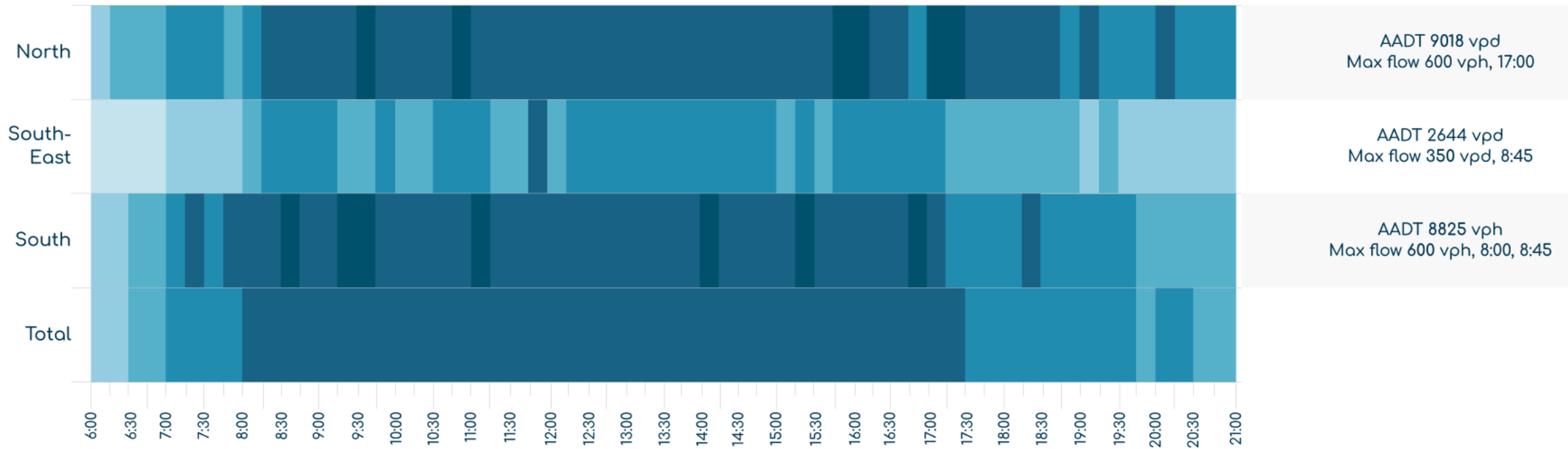
- Maximum
- 95th Percentile
- 85th Percentile
- Third quartile (Q3) 75th Percentile
- Median (Q2) 50th Percentile
- First quartile (Q1) 25th Percentile
- 15th Percentile
- Minimum 5th Percentile
- Free flow speed
- Filtered average speed
- Speed limit

HOSTOMEL'S'KE HWY-11-A LINE

Saturation/Delay analysis



Saturation heatmap



Scale



134 hpd

Cumulative delay



66 \$/d

or 24,000 \$/year economical damage



30 %

ASCT potentially can provide 30% delay decrease or save \$8,000 per year

Intraweek traffic patterns

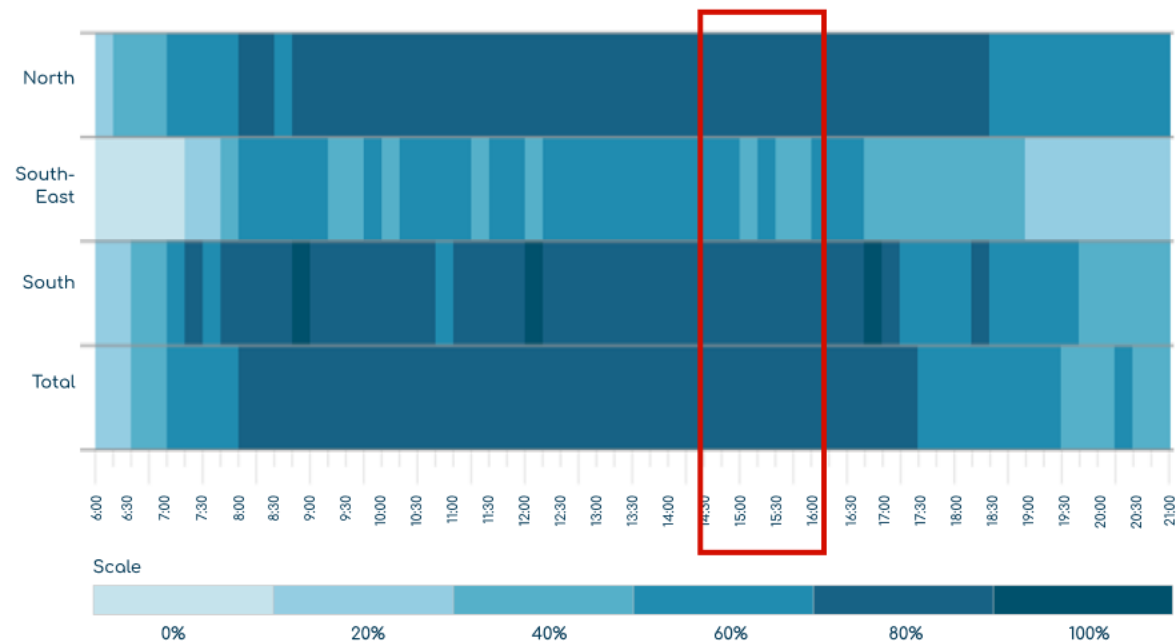
TUESDAY



Reference period - TUESDAY from 6 AM to 9 PM

Average speed gain - 0.00 %

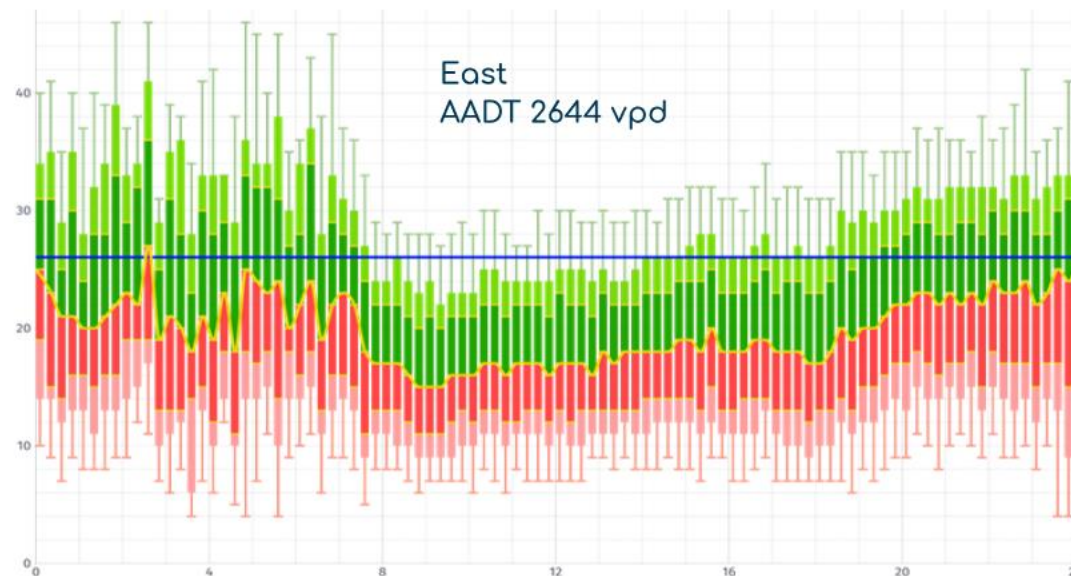
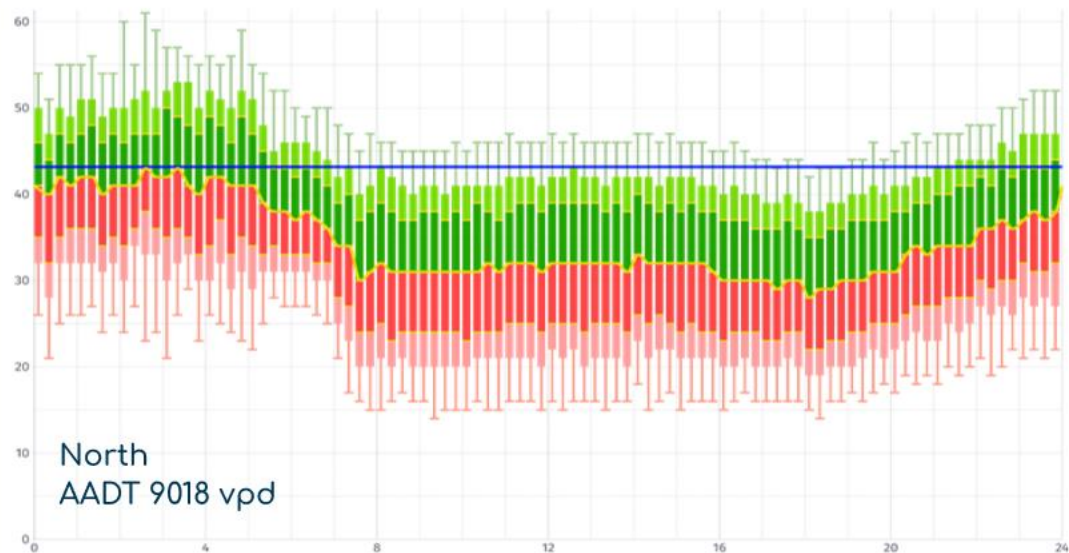
FRIDAY



Reference period - FRIDAY from 6 AM to 9 PM

Average speed gain - 0.00 %

Speed patterns



- Maximum
95th Percentile
- 85th Percentile
- Third quartile (Q3)
75th Percentile
- Median (Q2)
50th Percentile
- First quartile (Q1)
25th Percentile
- 15th Percentile
- Minimum
5th Percentile
- Free flow speed
- Filtered average speed
- Speed limit

